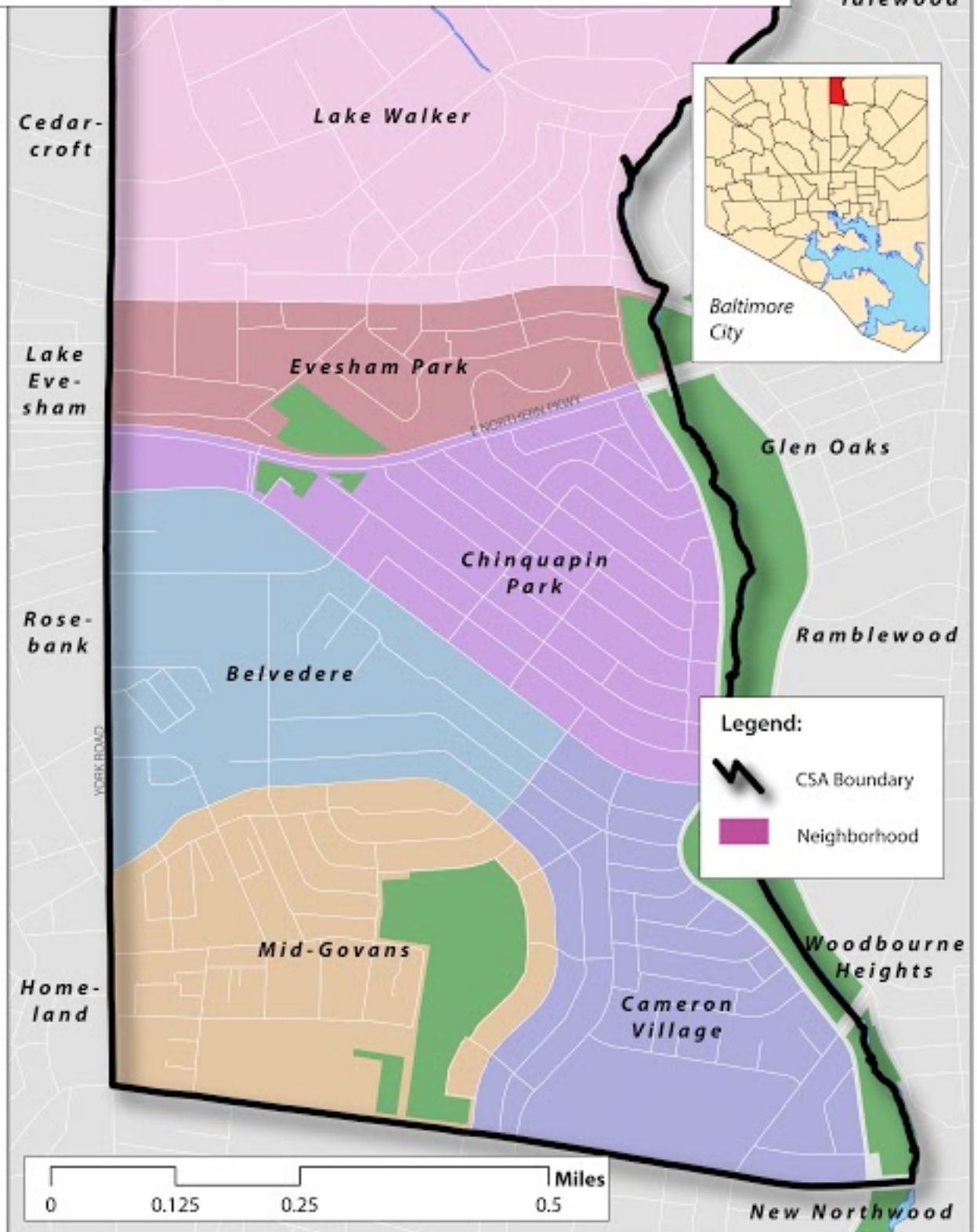


# Chinquapin Park/Belvedere CSA



Chinquapin Park/Belvedere							Baltimore City					
	2010	2011	2012	2013	Change 12-13	% Change	2010	2011	2012	2013	Change 12-13	% Change
<b>Population</b>												
Total Population	7,756	--	--	--	--	--	620,961	--	--	--	--	--
Total Male Population	3,527	--	--	--	--	--	292,249	--	--	--	--	--
Total Female Population	4,229	--	--	--	--	--	328,712	--	--	--	--	--
<b>Race/Ethnicity</b>												
Percent African American	69.0	--	--	--	--	--	63.8	--	--	--	--	--
Percent White	23.2	--	--	--	--	--	28.3	--	--	--	--	--
Percent Asian	1.7	--	--	--	--	--	2.3	--	--	--	--	--
Percent Persons of Two or More Races	1.8	--	--	--	--	--	1.7	--	--	--	--	--
Percent of Persons All Other Races	0.6	--	--	--	--	--	0.5	--	--	--	--	--
Percent Hispanic	3.7	--	--	--	--	--	4.2	--	--	--	--	--
Racial Diversity Index	49.5	--	--	--	--	--	54.5	--	--	--	--	--
<b>Age</b>												
Percent of Population 0 - 5 years old	7.2	--	--	--	--	--	6.6	--	--	--	--	--
Percent of Population 6 - 18 years old	14.2	--	--	--	--	--	14.9	--	--	--	--	--
Percent of Population 19 - 24 years old	11.1	--	--	--	--	--	12.6	--	--	--	--	--
Percent of Population 25 - 64 years old	56.2	--	--	--	--	--	54.2	--	--	--	--	--
Percent of Population 65 years and over	11.5	--	--	--	--	--	11.7	--	--	--	--	--
<b>Households</b>												
Total Households	3,359	--	--	--	--	--	249,903	--	--	--	--	--
Percent of Female-Headed Households with Children Under 18	51.5	--	--	--	--	--	54.9	--	--	--	--	--
Percent of Households with Children Under 18	29.3	--	--	--	--	--	28.4	--	--	--	--	--
Average Household Size	2.3	--	--	--	--	--	2.4	--	--	--	--	--
<b>Income and Poverty*</b>												
Median Household Income	--	--	--	\$47,600	--	--	--	--	--	\$41,385	--	--
Percent of Households Earning Less than \$25,000	--	--	--	26.9	--	--	--	--	--	33.2	--	--
Percent of Households Earning \$25,000 to \$40,000	--	--	--	16.7	--	--	--	--	--	15.4	--	--
Percent of Households Earning \$40,000 to \$60,000	--	--	--	19.0	--	--	--	--	--	16.6	--	--
Percent of Households Earning \$60,000 to \$75,000	--	--	--	11.0	--	--	--	--	--	5.4	--	--
Percent of Households Earning More than \$75,000	--	--	--	26.4	--	--	--	--	--	25.5	--	--
Percent of Households Living Below the Poverty Line	--	--	--	13.5	--	--	--	--	--	19.1	--	--
Percent of Children Living Below the Poverty Line	--	--	--	27.1	--	--	--	--	--	34.1	--	--
<b>Housing Market</b>												
Total Number of Homes Sold	74	59	63	55	-8.0	-12.7%	5,913	5,188	5,166	4,935	-231.0	-4.5%
Median Price of Homes Sold	\$117,450	\$130,000	\$124,000	\$125,000	\$1,000	0.8%	\$115,000	\$100,000	\$135,000	\$147,000	\$12,000	8.9%
Median Number of Days on Market	103	78	54	45	-9.0	-16.7%	101	60	43	33	-10.0	-23.3%
Percent of Homes Sold in Foreclosure (REO)	NA	24.2	11.5	5.5	-6.0	-52.3%	NA	33.1	13.9	3.4	-10.5	-75.6%
Percent of Homes Sold for Cash	NA	40.3	31.1	43.8	12.7	40.7%	NA	50.8	44.4	44.4	0.0	0.0%
Percent of Properties Under Mortgage Foreclosure	2.0	0.9	1.6	2.6	1.1	69.0%	2.2	1.0	1.4	2.5	1.1	78.7%
Percent of Properties that are Owner Occupied	74.0	70.3	71.6	70.5	-1.1	-1.5%	60.2	57.6	57.8	57.2	-0.6	-1.1%
Percent of Residential Properties that Do Not Receive Mail	6.0	5.3	4.3	4.8	0.6	13.9%	7.5	7.5	7.5	7.6	0.1	1.3%
<b>Housing Affordability*</b>												
Affordability Index - Mortgage	--	--	--	34.3	--	--	--	--	40.6	--	--	--
Affordability Index - Rent	--	--	--	60.5	--	--	--	--	53.2	--	--	--

\* Previous data using the American Community Survey for 2006-2010, 2007-2011, available upon request.

Chinquapin Park/Belvedere								Baltimore City					
	2010	2011	2012	2013	Change 12-13	% Change	2010	2011	2012	2013	Change 12-13	% Change	
<b>Housing Tax Credits</b>													
Homestead Tax Credits per 1,000 Homes	NA	674.9	636.7	482.0	-154.7	-22.9%	NA	481.8	441.3	380.2	-61.1	-13.8%	
Homeowner's Tax Credits per 1,000 Homes	NA	61.0	58.0	62.5	4.5	7.3%	NA	49.5	46.0	49.3	3.3	7.2%	
<b>Housing Permits and Enforcement</b>													
Percent of Properties with Rehab Permits (Over \$5,000)	2.3	1.8	1.3	2.2	0.9	48.9%	2.5	2.4	2.6	3.1	0.5	17.3%	
Number of New Construction Permits per 1,000 Homes	NA	0.0	0.0	0.4	0.4	NA	NA	0.7	0.9	0.8	-0.2	-16.9%	
Number of Demolition Permits per 1,000 Homes	NA	0.4	0.0	0.0	0.0	NA	NA	1.6	1.9	1.9	0.0	1.6%	
Percent of Properties that are Vacant and Abandoned	0.3	0.6	0.7	1.0	0.3	58.7%	7.9	7.8	8.0	8.0	0.1	1.0%	
Percent of Vacant Properties Owned by Baltimore City	NA	0.0	5.6	3.7	-1.9	-33.3%	NA	19.7	18.6	15.2	-3.4	-18.2%	
Percent of Properties with Housing Violations	2.3	3.8	2.9	2.9	0.0	-1.0%	3.8	4.7	4.7	5.9	1.2	26.7%	
<b>Total Residential Properties</b>													
Total Number of Residential Properties	2,694	2,688	2,689	2,689	0	0.0%	202,265	202,309	202,387	202,362	-25.0	0.0%	
<b>Crime and Safety</b>													
Part 1 Crime Rate per 1,000 Residents	43.6	33.4	44.5	42.8	-1.7	-3.8%	61.4	63.6	61.8	63.3	1.5	2.5%	
Violent Crime Rate per 1,000 Residents	12.6	7.1	9.0	9.2	0.1	1.4%	15.6	15.1	14.7	14.8	0.1	0.6%	
Property Crime Rate per 1,000 Residents	NA	26.3	35.5	32.9	-2.6	-7.3%	NA	48.6	47.0	47.6	0.6	1.3%	
<b>Juvenile Crime</b>													
Juvenile Arrest Rate per 1,000 Juveniles	NA	37.9	NA	NA	--	--	NA	79.2	NA	NA	--	--	
Juvenile Arrest Rate for Violent Offenses per 1,000 Juveniles	NA	10.2	NA	NA	--	--	NA	16.6	NA	NA	--	--	
Juvenile Arrest Rate for Drug-Related Offenses per 1,000 Juveniles	NA	7.3	NA	NA	--	--	NA	30.3	NA	0.0	--	--	
<b>Specific Crime Incidents</b>													
Domestic Calls for Service per 1,000 Residents	39.7	44.2	NA	NA	--	--	50.5	54.2	NA	NA	--	--	
Number of Shootings per 1,000 Residents	NA	0.3	NA	NA	--	--	NA	2.3	NA	NA	--	--	
Number of Gun-Related Homicides per 1,000 Residents	NA	0.0	0.4	0.1	-0.3	-66.7%	NA	0.2	0.3	0.3	0.0	3.9%	
Number of Common Assault Calls for Service per 1,000 Residents	NA	60.1	NA	NA	--	--	NA	86.0	NA	NA	--	--	
Number of Narcotics Calls for Service per 1,000 Residents	NA	17.9	NA	NA	--	--	NA	90.3	NA	NA	--	--	
Number of Automobile Accident Calls for Service per 1,000 Residents	NA	38.9	NA	NA	--	--	NA	52.2	NA	NA	--	--	
<b>Student Attendance and Enrollment</b>													
Number of Students Enrolled in 1st - 5th Grade	NA	368	369	352	-17	-4.6%	NA	31,234	31,604	31,853	249.0	0.8%	
Number of Students Enrolled in 6th - 8th Grade	NA	203	199	196	-3	-1.5%	NA	16,659	16,986	16,817	-169.0	-1.0%	
Number of Students Enrolled in 9th - 12th Grade	NA	301	291	299	8	2.7%	NA	24,311	23,706	22,950	-756.0	-3.2%	
Number of Students Ever Attended 1st - 5th Grade	381	391	388	362	-26	-6.7%	32,735	33,791	32,791	33,054	263.0	0.8%	
Number of Students Ever Attended 6th - 8th Grade	228	216	207	203	-4	-1.9%	18,778	17,999	17,463	17,481	18.0	0.1%	
Number of Students Ever Attended 9th - 12th Grade	351	338	306	307	1	0.3%	28,653	26,983	24,707	23,902	-805.0	-3.3%	
<b>Student Demographics</b>													
Percent of Students that are African American	93.3	91.7	90.4	91.3	0.9	1.0%	87.3	85.9	85.1	84.5	-0.5	-0.6%	
Percent of Students that are White (non-Hispanic)	3.6	4.7	4.8	5.0	0.2	4.2%	7.3	8.2	8.1	8.1	0.0	0.3%	
Percent of Students that are Hispanic	0.4	2.0	2.7	1.7	-1.0	-36.8%	2.9	4.1	4.8	5.6	0.8	16.1%	
Percentage of Students Receiving Free or Reduced Meals	79.6	75.7	68.1	75.3	7.2	10.5%	83.2	82.8	76.2	85.1	8.9	11.7%	
Percentage of Students Enrolled in Special Education Programs	15.4	16.7	16.6	15.2	-1.4	-8.3%	17.3	16.3	16.5	16.2	-0.3	-1.7%	
<b>Student Attendance, Suspensions and Expulsions</b>													
Percent of 1st-5th Grade Students that are Chronically Absent	10.5	12.3	10.6	10.5	-0.1	-0.7%	12.3	16.6	12.7	13.1	0.4	3.4%	
Percent of 6th-8th Grade Students that are Chronically Absent	9.2	10.6	6.3	12.8	6.5	103.9%	16.9	16.7	15.1	13.3	-1.8	-11.8%	
Percent of 9th-12th Grade Students that are Chronically Absent	34.5	29.6	31.7	28.3	-3.4	-10.6%	39.7	42.1	40.4	35.6	-4.8	-11.9%	
Percentage of Students Suspended or Expelled During School Year	7.1	8.6	9.1	7.2	-1.9	-20.8%	8.8	9.5	9.6	7.7	-1.9	-20.2%	
<b>Student Performance (Elementary and Middle)</b>													
Kindergarten School Readiness/Ready at 5	NA	68.12	73.08	84.34	11.3	15.4%	NA	66	73	78	4.5	6.2%	
Percentage of 3rd Grade Students Passing MSA Math	86.6	87.0	89.4	77.0	-12.4	-13.8%	77.5	73.3	73.6	68.1	-5.5	-7.5%	

Chinquapin Park/Belvedere							Baltimore City					
Percentage of 3rd Grade Students Passing MSA Reading	82.1	83.1	80.6	71.6	-9.0	-11.1%	72.5	69.4	65.5	64.9	-0.6	-0.9%
Percentage of 5th Grade Students Passing MSA Math	73.8	75.0	79.5	79.5	0.0	0.0%	70.9	64.7	70.4	65.0	-5.4	-7.7%
Percentage of 5th Grade Students Passing MSA Reading	87.7	83.8	83.3	90.4	7.1	8.5%	80.4	76.1	75.8	73.6	-2.2	-2.9%
Percentage of 8th Grade Students Passing MSA Math	30.3	37.3	41.5	44.4	2.9	7.0%	31.0	35.1	39.5	37.9	-1.6	-4.1%
Percentage of 8th Grade Students Passing MSA Reading	42.4	51.7	59.7	66.7	7.0	11.7%	52.0	61.2	58.8	62.0	3.2	5.4%
<b>Student Performance (High School)</b>												
Percentage of Students Passing H.S.A. English	44.7	38.1	31.3	39.2	8.0	25.5%	37.3	36.2	34.0	32.5	-1.5	-4.3%
Percentage of Students Passing H.S.A. Biology	44.0	32.7	35.8	42.0	6.2	17.3%	42.7	36.2	36.4	36.7	0.4	1.0%
Percentage of Students Passing H.S.A. Algebra	22.7	23.6	14.8	20.5	5.7	38.2%	25.9	22.5	21.0	23.6	2.7	12.7%
<b>Student Dropout and Completion</b>												
High School Dropout/Withdrawal Rate	4.3	2.4	2.6	0.7	-1.9	-74.8%	3.9	4.2	4.1	2.1	-2.0	-48.7%
High School Completion Rate	76.4	84.1	82.4	86.6	4.2	5.0%	78.4	80.3	80.3	79.3	-1.1	-1.3%
<b>Student Mobility</b>												
Percent of Students Switching Schools within School Year	NA	5.6	7.3	6.0	-1.3	-18.0%	NA	7.2	7.1	7.9	0.8	11.9%
<b>Youth Labor Force Engagement</b>												
Percentage of Population aged 16-19 in School and/or Employed	81.5	84.1	82.3	95.0	12.7	15.4%	86.0	87.4	87.9	87.7	-0.2	-0.2%
<b>Birth Outcomes</b>												
	<b>2010</b>	<b>2011</b>	<b>2012</b>	<b>2013</b>	<b>Change 12-13</b>	<b>% Change</b>	<b>2010</b>	<b>2011</b>	<b>2012</b>	<b>2013</b>	<b>Change 12-13</b>	<b>% Change</b>
Teen Birth Rate per 1,000 Females (aged 15-19)	50.6	84.4	63.3	16.9	-46.4	-73.3%	51.1	46.6	41.5	36.1	-5.3	-12.8%
Percent of Births Delivered at Term (37-42 Weeks)	87.0	89.3	89.4	89.3	-0.1	-0.1%	86.5	87.4	86.6	87.5	0.9	1.0%
Percent of Babies Born with a Satisfactory Birth Weight	92.6	87.7	90.2	91.3	1.1	1.2%	88.3	88.4	88.2	88.1	-0.1	-0.1%
Percent of Births Where the Mother Received Early Prenatal Care	63.9	58.2	49.2	54.4	5.1	10.4%	57.0	59.0	62.7	49.5	-13.2	-21.1%
<b>Lead Poisoning</b>												
Number of Children (aged 0-6) Tested for Elevated Blood Lead Levels	146	233	138	105	-33.0	-23.9%	19,702	19,036	18,723	18,535	-188.0	-1.0%
Percent of Children (aged 0-6) with Elevated Blood Lead Levels	0.0	0.0	0.0	0.0	0.0	NA	1.6	1.4	1.2	1.2	0.0	1.0%
<b>Life Expectancy and Mortality</b>												
Life Expectancy	NA	75.4	74.9	75.0	0.1	0.1%	NA	73.5	73.9	73.5	-0.4	-0.5%
Infant Mortality	NA	11.1	11.3	11.8	0.5	4.7%	NA	11.7	9.7	10.7	1.0	10.5%
Mortality by Age (1-14 years old)	NA	1.6	1.6	0.0	-1.6	-100.0%	NA	2.8	2.5	1.9	-0.6	-23.0%
Mortality by Age (15-24 years old)	NA	9.0	12.5	12.5	0.0	0.0%	NA	13.5	11.9	9.1	-2.8	-23.8%
Mortality by Age (25-44 years old)	NA	18.3	18.3	13.7	-4.6	-25.0%	NA	27.3	24.0	18.9	-5.1	-21.3%
Mortality by Age (45-64 years old)	NA	97.9	107.1	85.9	-21.2	-19.8%	NA	117.9	114.1	92.8	-21.3	-18.7%
Mortality by Age (65-84 years old)	NA	316.3	311.3	256.5	-54.8	-17.6%	NA	393.7	373.8	303.4	-70.4	-18.8%
Mortality by Age (85 and over)	NA	1,576.5	1,694.1	1,458.8	-235.3	-13.9%	NA	1,315.0	1,231.5	1,036.5	-195.0	-15.8%
<b>Community Built and Food Environment</b>												
Liquor Outlet density (per 1,000 Residents)	0.0	1.3	0.8	1.3	0.5	66.7%	0.0	1.3	1.2	1.1	-0.1	-6.8%
Fast Food Outlet Density (per 1,000 Residents)	NA	0.4	NA	0.8	NA	NA	0.0	1.4	NA	1.5	NA	NA
Average Healthy Food Availability Index	NA	NA	15.3	NA	NA	NA	NA	NA	10.3	0.0	-10.3	-100.0%

Chinquapin Park/Belvedere							Baltimore City					
<b>Social Assistance Programs and Assistance</b>												
Percent of Families Receiving TANF	NA	5.6	7.3	5.6	-1.7	-23.5%	NA	9.4	11.0	9.8	-1.2	-11.0%
<b>Arts and Culture</b>												
	<b>2010</b>	<b>2011</b>	<b>2012</b>	<b>2013</b>	<b>Change 12-13</b>	<b>% Change</b>	<b>2010</b>	<b>2011</b>	<b>2012</b>	<b>2013</b>	<b>Change 12-13</b>	<b>% Change</b>
Number of Persons with Library Cards per 1,000 residents	NA	237	248	218	-30	-12.0%	NA	250	242	210	-31	-13.0%
Number of Businesses that are Arts-Related per 1,000 residents	0.3	0.1	0.1	0.1	0.0	0.0%	0.5	0.4	0.5	0.5	0.0	10.9%
Total Employment in Arts-Related Businesses	19	10	10	2	-8	-80.0%	2,837	2,727	2,894	3,267	373	12.9%
<b>Labor Force Participation and Employment*</b>												
	<b>2010</b>	<b>2011</b>	<b>2012</b>	<b>2013</b>	<b>Change 12-13</b>	<b>% Change</b>	<b>2010</b>	<b>2011</b>	<b>2012</b>	<b>2013</b>	<b>Change 12-13</b>	<b>% Change</b>
Percent Population 16-64 Employed	--	--	--	73.1	NA	NA	--	--	61.0	60.1	-0.9	-1.5%
Percent Population 16-64 Unemployed and Looking for Work	--	--	--	9.2	NA	NA	--	--	9.8	9.9	0.1	0.9%
Percent Population 16-64 Not in Labor Force	--	--	--	17.6	NA	NA	--	--	29.4	30.0	0.7	2.2%
Unemployment Rate	--	--	--	11.2	NA	NA	--	--	13.9	14.2	0.3	1.8%
Percent of Adult Population on Parole/Probation				4.2	4.2	NA						
<b>Educational Attainment (Population Aged 25+)*</b>												
Percent with Less Than a High School Diploma or GED	--	--	--	11.3	NA	NA	--	--	20.4	19.8	-0.6	-2.7%
Percent with High School Diploma/Some College/Associates Degree	--	--	--	54.2	NA	NA	--	--	53.5	53.4	-0.1	-0.2%
Percent with a Bachelor's Degree or Above	--	--	--	34.4	NA	NA	--	--	26.1	26.8	0.7	2.6%
<b>Commercial Business Activity</b>												
Total Number of Commercial Properties	57	57	56	56	-1.0	-1.8%	15,828	15,741	15,609	15,521	-132.0	-0.8%
Percent of Commercial Properties with Rehab Permits Above \$5,000	10.5	17.5	21.4	28.6	3.9	18.1%	12.4	13.6	14.4	13.0	0.9	6.3%
<b>Business and Employment</b>												
Total Number of Businesses	140	128	145	172	17.0	11.7%	20,243	19,318	20,403	22,869	1,085.0	5.6%
Total Number of Employees	1,170	1,153	1,211	1,305	58.0	4.8%	377,092	342,817	341,911	340,804	-906.0	-0.3%
Number of Businesses with Under 50 Employees	136	124	140	164	16.0	11.4%	19,321	18,503	19,265	21,572	762.0	4.1%
Percent of Businesses that are 1 year old or less	5.7	7.0	9.7	6.4	2.6	27.2%	8.0	8.1	7.9	5.2	-0.2	-2.8%
Percent of Businesses that are 2 years old or less	21.4	10.9	20.0	22.7	9.1	45.3%	20.0	14.8	18.7	21.8	3.9	26.7%
Percent of Businesses that are 4 years old or less	32.1	28.9	35.2	37.8	6.3	17.8%	34.2	31.6	32.6	38.1	1.1	3.3%
Number of Businesses by Selected Neighborhood Industry	106	99	107	123	8.0	7.5%	14,116	13,621	14,095	15,833	474.0	3.5%
Neighborhood Businesses per 1,000 residents	13.7	12.8	13.8	15.5	1.0	7.5%	22.7	21.9	22.7	25.4	0.8	3.5%
Total number of Employees by Selected Neighborhood Industry	880	868	891	963	23.0	2.6%	204,596	191,144	191,306	183,725	162.0	0.1%
<b>Banking</b>												
Number of Banks and Bank Branches per 1,000 Residents	NA	0.3	0.4	0.4	0.1	33.3%	NA	0.2	0.2	0.2	0.0	-7.3%
<b>Regional Dynamics</b>												
Percentage of Residents Commuting to Work Outside of City	55.1	NA	48	NA	NA	NA	54.2	NA	54	NA	NA	NA

\* Previous data using the American Community Survey for 2006-2010, 2007-2011, available upon request.

Chinquapin Park/Belvedere							Baltimore City					
	2010	2011	2012	2013	Change 12-13	% Change	2010	2011	2012	2013	Change 12-13	% Change
<b>Sanitation</b>												
Rate of Dirty Streets and Alleys Reports per 1,000 Residents	26.3	32.1	47.3	25.5	15.2	47.4%	75.8	65.3	70.5	52.6	-17.9	-27.5%
Rate of Clogged Storm Drain Reports per 1,000 Residents	5.0	4.3	6.1	3.9	1.8	42.4%	4.9	6.4	6.2	6.2	0.0	0.0%
<b>Transportation*</b>												
Percent of Population that Drove Alone to Work	--	--	--	67.8	NA	NA	--	--	61.3	62.2	0.9	1.4%
Percent of Population that Carpool to Work	--	--	--	11.0	NA	NA	--	--	11.0	10.3	-0.6	-5.8%
Percent of Population that Uses Public Transportation to Get to Work	--	--	--	16.2	NA	NA	--	--	18.8	18.3	-0.4	-2.2%
Percent of Population that Walks to Work	--	--	--	2.2	NA	NA	--	--	6.7	6.8	0.1	1.9%
Percent of Population Using All Other Means of Transit to Work	--	--	--	2.9	NA	NA	--	--	2.3	2.3	0.0	1.7%
Percent of Population with Travel Time to Work of 0-14 Minutes	--	--	--	18.9	NA	NA	--	--	17.8	17.1	-0.7	-4.0%
Percent of Population with Travel Time to Work of 15-29 Minutes	--	--	--	35.7	NA	NA	--	--	38.4	38.8	0.4	1.0%
Percent of Population with Travel Time to Work of 30-44 Minutes	--	--	--	24.2	NA	NA	--	--	23.7	24.0	0.3	1.1%
Percent of Population with Travel Time to Work of 45 Minutes and Over	--	--	--	21.1	NA	NA	--	--	20.1	20.2	0.1	0.3%
Walk Score	NA	74.6	NA	0.0	NA	NA	NA	52.4	NA	NA	NA	NA
Percent of Households with No Vehicles Available	--	--	--	24.5	NA	NA	--	--	30.0	30.3	0.3	0.9%
<b>Environment and Green Space</b>												
Percent of Area Covered by Trees	NA	39.4	NA	NA	NA	NA	NA	27.4	NA	NA	NA	NA
Number of Trees of Planted	--	--	--	146.0	NA	NA	--	--	--	6194	NA	NA
Number of Community Managed Open Spaces	NA	3	NA	NA	NA	NA	NA	918	NA	NA	NA	NA
Water Use	NA	15.0	NA	NA	NA	NA	NA	16.0	NA	NA	NA	NA
<b>Energy and Weatherization</b>												
Percent of Residences Heated by Utility Gas*	--	--	70.2	66.1	-4.1	-5.8%	--	--	65.0	64.6	-0.4	-0.6%
Percent of Residences Heated by Electricity*	--	--	21.7	24.3	2.6	11.9%	--	--	24.7	25.9	1.2	4.8%
Percent of Homes Weatherized	0.4	0.3	0.6	0.5	-0.1	-22.5%	0.5	1.1	0.6	0.5	-0.1	-19.9%
<b>Community Assets and Engagement</b>												
Percent of Population (18+) Who are Registered to Vote	83.2	NA	85.9	NA	NA	NA	75.0	NA	74.7	NA	NA	NA
Percent Population (18+) Who Voted in the General Election	51.2	NA	61.9	NA	NA	NA	44.4	NA	51.5	NA	NA	NA

\* Previous data using the American Community Survey for 2006-2010, 2007-2011, 2008-2012, available upon request.

For more information on these indicators, including definitions and downloads, please visit our website at:

<http://www.bnaijfi.org>