

McElderry Park Revitalization Coalition Byrne Criminal Justice Innovation Data Presentation

November 11, 2013



Agenda

- 6:15-6:25 Introductions
- 6:25-6:50 Presentation of Findings
- 6:50-7:00 Move to small groups
- 7:00-7:45 Small Group Discussions
- 7:45-7:55 Report out by tables
- 7:55-8:00 Concluding Thoughts

Planning Phase

Project Details for Phase 1

3-Stages

- Community Organizing and Mobilizing
Residents and Stakeholders
- Data Collecting
Speaking with residents to assess community concerns
- Program Implementation
Funds evidence-based programs

Review BCJI Planning Grant Resources

- We are finalizing Phase I
 - Planning
 - Data-Driven approach to finding community solutions
- Budget for Phase II
 - Between \$235,000 - \$325,000 for programming
 - Specific guidelines on what BCJI funding will support

Key is leveraging partner resources

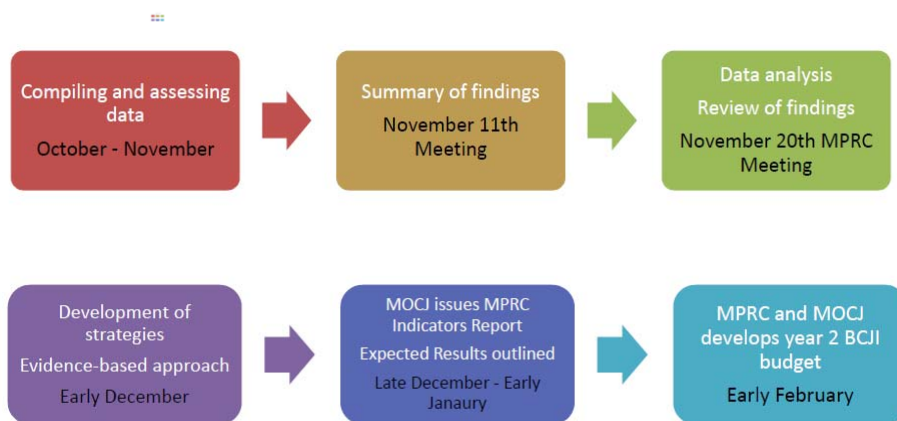
McElderry Park Community Association	Amazing Grace Lutheran Church	Southeast Police District
Banner Neighborhoods	East Monument Main Street	Safe Streets East
Mayor's Office of Criminal Justice	Monument McElderry Fayette Revitalization Plan	Julie Community Center
Environmental Justice Partnership	Monument Street Merchants Association	Charm City Clinic
Johns Hopkins University	Baltimore Neighborhood Indicators Alliance	Baltimore Development Corp
Coalition to End Childhood Lead Poisoning		Historic East Baltimore Community Action Coalition

Evidenced-based Programs & Practices

What is it?

- Learning from others
 - Program: Specific set of activities for a defined purpose
 - Example: “Safe Streets”
 - Practices: Similar strategies that aim to address specific issue
 - Example: Mentoring
- Elements from other programs that make them “work”

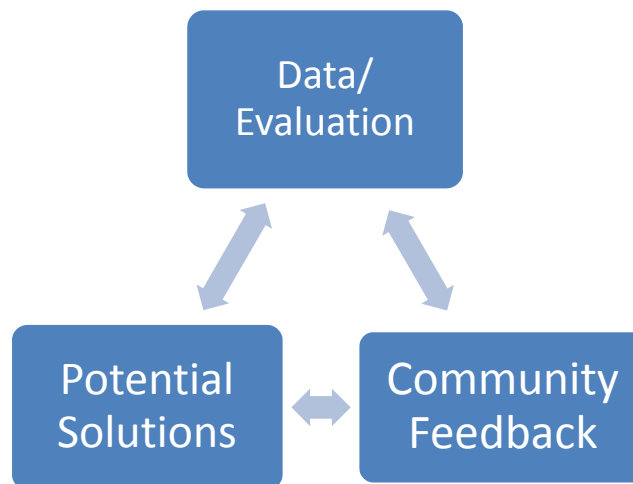
Process for Decision-Making



Data Gathering & Analysis

- Community Indicators/Mapping/Data Analysis
 - Reduce crime in & around hotspots
- Focus Groups
 - Address factors causing crime

Research is a Collaborative Process



What is the Data Profile for McElderry Park?

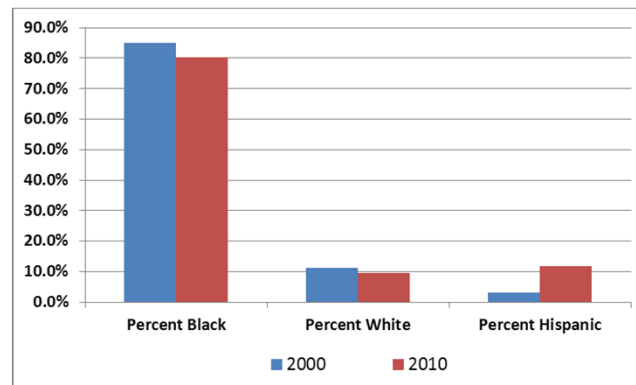
- Population
- Families and Poverty
- Housing
- Sanitation
- Crime and Safety

Residents

Population

2000 to 2010 = **-10%**

Race/Ethnicity



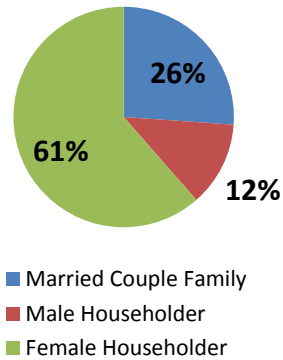
Households & Income

Families

Of female-headed, 75% have kids

Median Household Income

2011 = \$35,283
(City = \$40,100)



Poverty

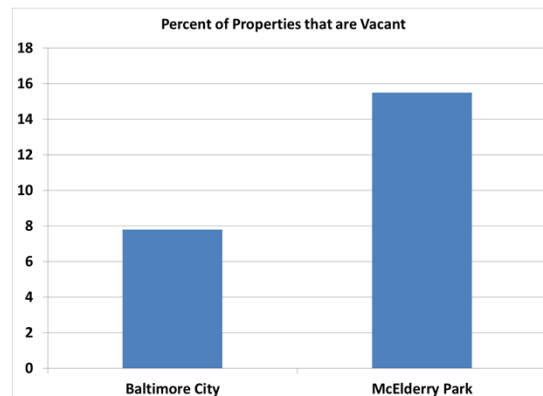
26% families with children live in Poverty
24% receive TANF (Baltimore City = 9%)

Housing

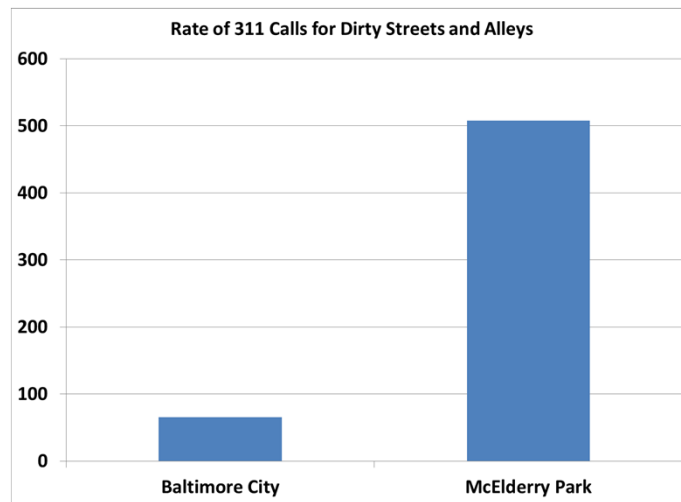
Owner Occupancy = 23%

Median Home Sales Price = \$17,500

Vacancy Rate = 15.5% (*2x City average*)



Sanitation



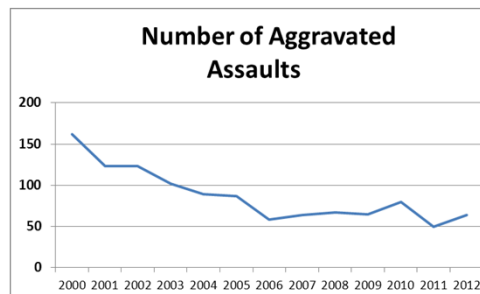
Crime and Safety

Homicides (2000-2012)

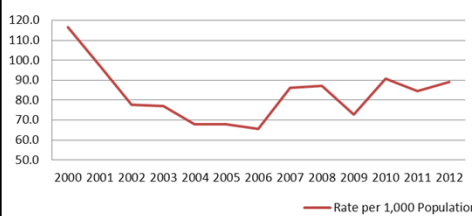
Range between 0 and 5

Rapes (2000-2012)

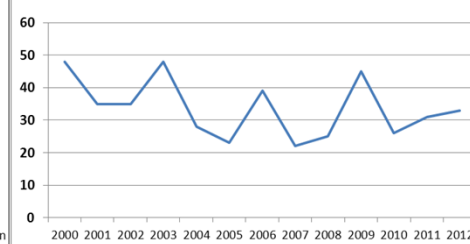
Range between 0 and 5



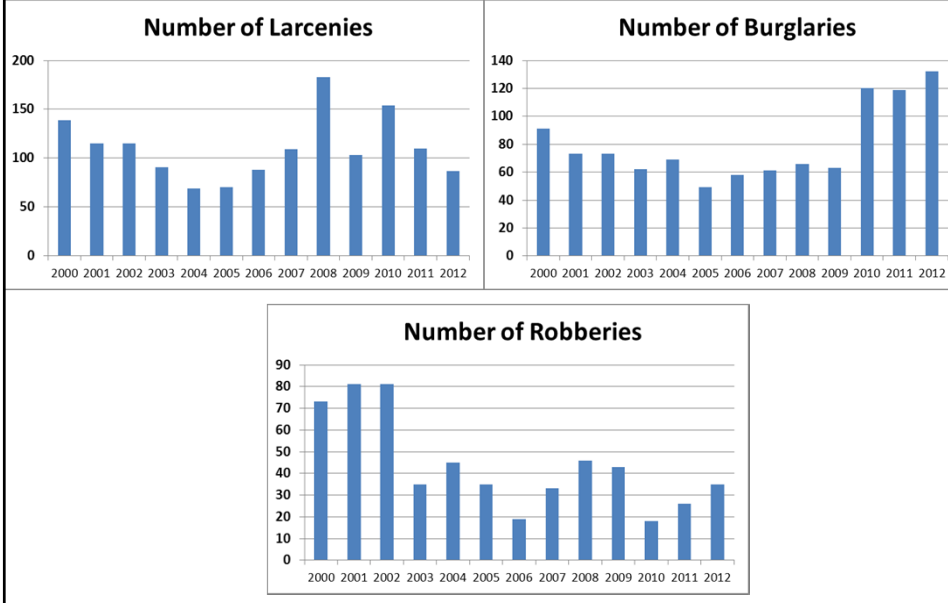
McElderry Park Part 1 Crime Rate, 2000-2012



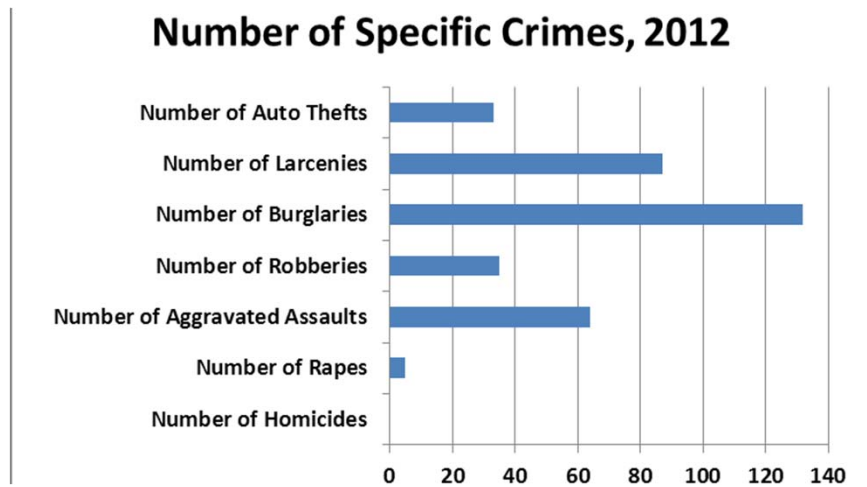
Number of Auto Thefts



Property Crimes



Crime in 2012



What Did We Learn from Focus Groups?

- Outreach to all stakeholders
- 8 focus groups; 40 people
- What are the main issues in this community?

Top Resident Concerns

1. Physical Disorder
2. Crime & Safety
3. Law enforcement relations & response
4. Lack of employment
5. Lack of youth programs/activities
6. Nuisance issues
7. Community relations
8. Large social issues
9. Health & safety
10. Community resources

Issues Raised

- Physical Disorder
 - Cleanliness of community
 - Vacant buildings
 - Accountability
 - Message sent to others
- Crime & Safety
 - Crime attractors
 - Range of crime types
 - Fear of crime
 - Impact on businesses
 - Merchant involvement

Issues Raised

- Law enforcement
 - Lack of resources; inconsistency
 - No sense of urgency
 - Relationships with residents
 - Police perception of residents
- Lack of Employment
 - Overall lack of opportunities
 - Criminal records; rejection
 - Career training – not linked to jobs
 - Lack of entrepreneur opportunities
- Lack of Youth Programs & Activities
 - Criminal records
 - Lack of positive and consistent mentors
 - Negative community influences
 - No safe place to play

Solutions

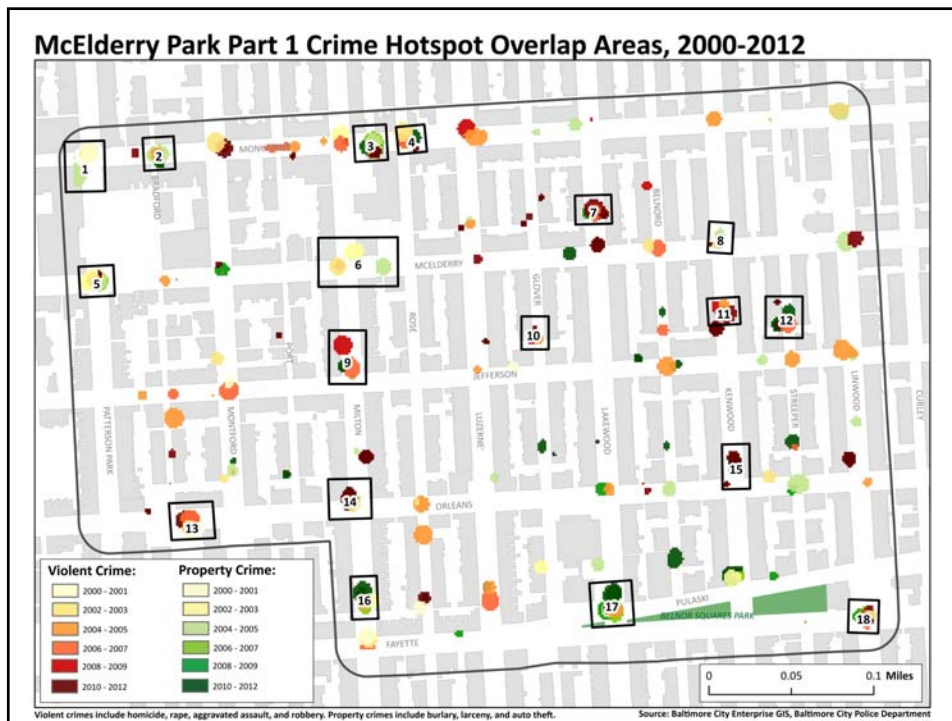
- Physical Disorder
 - Enhance landlord & resident accountability
 - Incentive programs
 - More resources
 - Involve youth
- Crime & Safety
 - Improve lighting
 - Cameras
 - Community policing; foot patrol; night patrol

Solutions

- Law Enforcement
 - Training to improve relations
 - Community policing; foot patrol
- Employment
 - Program focused on those with criminal records
 - Training linked to jobs
 - Entrepreneurial programs
 - Educational resources
- Youth Programs & Activities
 - More programs; community center
 - Improvement of local playground
 - Positive role models; mentorship

Crime Mapping

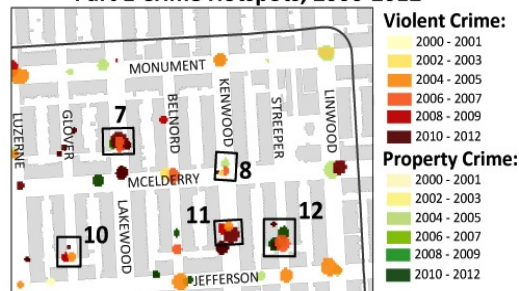
- Analysis of violent and property crimes, 2000-2012
- 911 calls for service
- Juvenile and drug-related crimes
- 311 calls for trash
- Code Violations, vacant housing
- Built environment



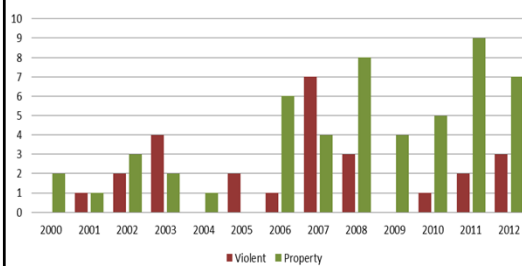
Hotspot Profile

- #12 500 Block of Streeper
- 13 Calls for narcotics in 2011
- Juvenile arrests for drug-related crime

Part 1 Crime Hotspots, 2000-2012



#12 - Streeper Street and McElderry/Jefferson Alley
Number of Crime Incidents in Hotspot by Year, 2000-2012



Streeper St., McElderry/Jefferson Alley to the west



Common Themes

- Nuisance Uses
 - Liquor Stores
- Physical Disorder
 - Vacant Housing
- Social Disorder
 - Clear relationship between calls for narcotics and hotspots
 - Juvenile arrests for drug-related crimes
- Places of Opportunity
 - Schools (Tench Tilghman and William Paca)
 - Library
- Design
- Major Streets/Alleys
 - Businesses (Monument Street corridor/Orleans Street)
 - Narrow alleys in residential areas
- Community

Solutions

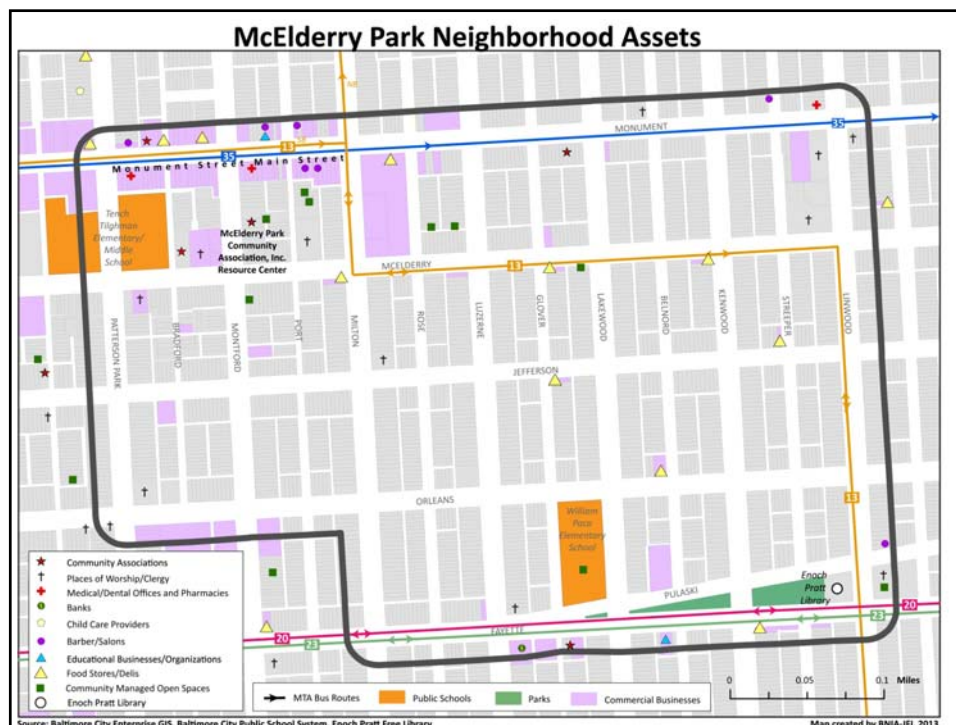
- Citizen calls for narcotics should be monitored
- Support New Zoning Code to De-densify liquor stores
- Implement all strategies in Vacants to Value including strategic demolition
- Community Clean-Ups
- Better Security around Schools, Libraries, Parking Lots
- More Streetlights
- Support and Develop Block Captains

Coordinating with Other Studies

- Well-Being of Adolescents in Violent Environments (WAVE)
 - 62.2% of youth surveyed in McElderry Park feel Unsafe or Very Unsafe in the neighborhood
 - 56.8% of youth surveyed in McElderry Park say as far as they know, there are gangs in the neighborhood
- Community Health Initiative (CHI)
 - Community Asset Mapping

Asset Mapping

- Identify people, places, and programs
 - Churches
 - Schools
 - Library
 - Transit routes
 - Food stores
 - Salons
 - Banks
 - Health care centers
 - Community managed open spaces (gardens)
 - Community organizations/ associations



Small Group Discussion

- Break Out Sessions
 - Take a look at specific hotspots
 - Add to list of solutions
- Review Asset Map
 - Identify more assets

Next Steps

- Review findings with MPRC Steering Committee
- Brief Baltimore City Police Department and other City Agencies
- Respond to proposed solutions from Community and other stakeholders
- Prepare BCJI Phase II program and budget