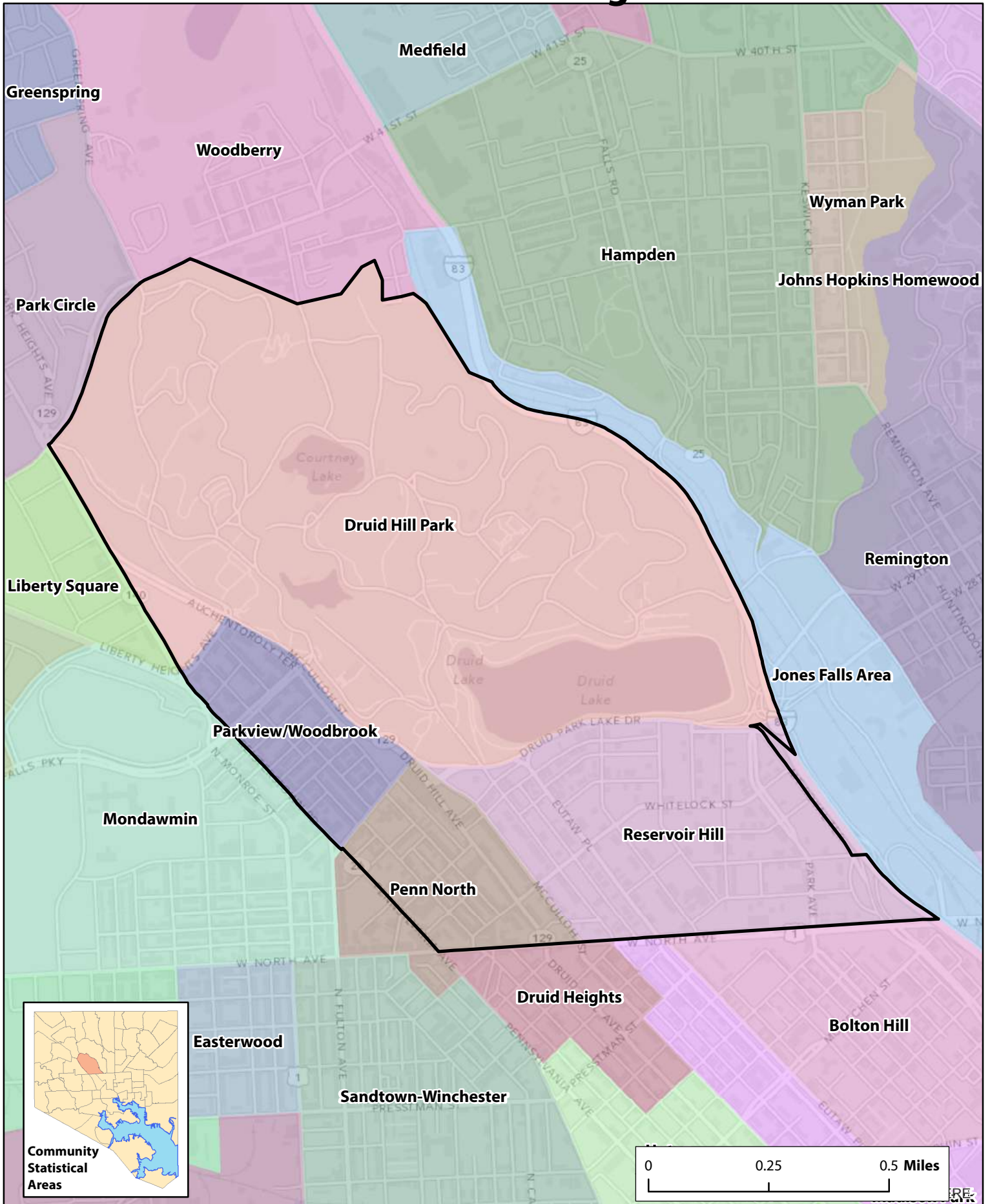


Penn North CSA and Neighborhoods



Penn North/Reservoir Hill								Baltimore City						
	2010	2011	2012	2013	2014	Change 13-14	% Change	2010	2011	2012	2013	2014	Change 13-14	% Change
Population														
Total Population	9,668	--	--	--	--	--	--	620,961	--	--	--	--	--	--
Total Male Population	4,501	--	--	--	--	--	--	292,249	--	--	--	--	--	--
Total Female Population	5,167	--	--	--	--	--	--	328,712	--	--	--	--	--	--
Race/Ethnicity														
Percent African American	90.3	--	--	--	--	--	--	63.8	--	--	--	--	--	--
Percent White	5.7	--	--	--	--	--	--	28.3	--	--	--	--	--	--
Percent Asian	0.3	--	--	--	--	--	--	2.3	--	--	--	--	--	--
Percent Persons of Two or More Races	1.7	--	--	--	--	--	--	1.7	--	--	--	--	--	--
Percent of Persons All Other Races	0.5	--	--	--	--	--	--	0.5	--	--	--	--	--	--
Percent Hispanic	1.5	--	--	--	--	--	--	4.2	--	--	--	--	--	--
Racial Diversity Index	19.3	--	--	--	--	--	--	54.5	--	--	--	--	--	--
Age														
Percent of Population 0 - 5 years old	7.8	--	--	--	--	--	--	6.6	--	--	--	--	--	--
Percent of Population 6 - 18 years old	16.5	--	--	--	--	--	--	14.9	--	--	--	--	--	--
Percent of Population 19 - 24 years old	10.1	--	--	--	--	--	--	12.6	--	--	--	--	--	--
Percent of Population 25 - 64 years old	56.4	--	--	--	--	--	--	54.2	--	--	--	--	--	--
Percent of Population 65 years and over	9.2	--	--	--	--	--	--	11.7	--	--	--	--	--	--
Households														
Total Households	4,248	--	--	--	--	--	--	249,903	--	--	--	--	--	--
Percent of Female-Headed Households with Children Under 18	66.8	--	--	--	--	--	--	54.9	--	--	--	--	--	--
Percent of Households with Children Under 18	27.9	--	--	--	--	--	--	28.4	--	--	--	--	--	--
Average Household Size	2.3	--	--	--	--	--	--	2.4	--	--	--	--	--	--
Income and Poverty*														
Median Household Income	--	--	--	--	\$33,264	--	--	--	--	--	--	\$41,819	--	--
Percent of Households Earning Less than \$25,000	--	--	--	--	40.4	--	--	--	--	--	--	32.7	--	--
Percent of Households Earning \$25,000 to \$40,000	--	--	--	--	18.4	--	--	--	--	--	--	15.4	--	--
Percent of Households Earning \$40,000 to \$60,000	--	--	--	--	19.9	--	--	--	--	--	--	16.4	--	--
Percent of Households Earning \$60,000 to \$75,000	--	--	--	--	5.9	--	--	--	--	--	--	9.3	--	--
Percent of Households Earning More than \$75,000	--	--	--	--	15.5	--	--	--	--	--	--	26.2	--	--
Percent of Households Living Below the Poverty Line	--	--	--	--	31.1	--	--	--	--	--	--	19.5	--	--
Percent of Children Living Below the Poverty Line	--	--	--	--	47.2	--	--	--	--	--	--	34.6	--	--
Housing Market														
Total Number of Homes Sold	117	84	66	72	137	65.0	90.3%	5,913	5,188	5,166	4,935	7,822	2887.0	58.5%
Median Price of Homes Sold	\$44,000	\$39,950	\$70,000	\$83,500	\$65,000	-\$18,500	-22.2%	\$115,000	\$100,000	\$135,000	\$147,000	\$126,325	-\$20,675	-14.1%
Median Number of Days on Market	101	59	40	30	36	5.5	18.3%	101	60	43	33	38	5.0	15.2%
Percent of Homes Sold in Foreclosure (REO)	NA	58.4	18.3	4.0	2.4	-1.6	-39.0%	NA	33.1	13.9	3.4	2.0	-1.4	-41.6%
Percent of Homes Sold for Cash	NA	71.4	60.6	53.3	62.2	8.9	16.6%	NA	50.8	44.4	44.4	45.9	1.5	3.3%
Percent of Properties Under Mortgage Foreclosure	2.8	1.4	1.8	3.1	2.4	-0.7	-23.7%	2.2	1.0	1.4	2.5	2.0	-0.5	-21.2%
Percent of Properties that are Owner Occupied	39.2	38.2	37.2	36.2	35.7	-0.5	-1.3%	60.2	57.6	57.8	57.2	56.1	-1.1	-1.9%
Percent of Residential Properties that Do Not Receive Mail	15.9	16.3	16.4	16.7	19.3	2.7	15.9%	7.5	7.5	7.5	7.6	8.4	0.8	9.9%
Housing Affordability*														
Affordability Index - Mortgage	--	--	--	--	42.6	--	--	--	--	--	--	38.7	--	--
Affordability Index - Rent	--	--	--	--	52.5	--	--	--	--	--	--	51.8	--	--
Rate of Housing Choice Vouchers per 1,000 Rental Units	--	--	--	--	195.7	--	--	--	--	--	--	131.3	--	--

* Previous data using the American Community Survey for 2006-2010, 2007-2011, 2008-2012, 2009-2013 available upon request.

Penn North/Reservoir Hill								Baltimore City						
	2010	2011	2012	2013	2014	Change 13-14	% Change	2010	2011	2012	2013	2014	Change 13-14	% Change
Housing Tax Credits														
Homestead Tax Credits per 1,000 Homes	NA	320.6	305.7	277.8	278.2	0.4	0.1%	NA	481.8	441.3	380.2	376.2	-4.0	-1.1%
Homeowner's Tax Credits per 1,000 Homes	NA	25.5	25.2	27.5	27.8	0.3	1.2%	NA	49.5	46.0	49.3	49.4	0.0	0.1%
Historic Tax Credits per 1,000 Homes	NA	NA	20.8	21.1	21.1	0.0	-0.1%	NA	NA	6.0	6.4	6.4	0.0	0.0%
Housing Permits and Enforcement														
Percent of Properties with Rehab Permits (Over \$5,000)	3.8	2.5	3.7	4.2	2.0	-2.2	-52.5%	2.5	2.4	2.6	3.1	2.7	-0.4	-12.9%
Number of New Construction Permits per 1,000 Homes	NA	0.3	0.3	0.0	0.0	0.0	NA	NA	0.7	0.9	0.8	2.3	1.5	203.0%
Number of Demolition Permits per 1,000 Homes	NA	0.0	1.3	3.0	2.3	-0.7	-22.3%	NA	1.6	1.9	1.9	2.1	0.2	9.8%
Percent of Properties that are Vacant and Abandoned	16.4	16.1	16.0	16.3	15.8	-0.5	-2.8%	7.9	7.8	8.0	8.0	8.1	0.1	0.9%
Percent of Vacant Properties Owned by Baltimore City	NA	8.8	8.4	6.0	NA	NA	NA	NA	19.7	18.6	15.2	NA	NA	NA
Percent of Properties with Housing Violations	8.1	9.8	11.1	15.6	NA	NA	NA	3.8	4.7	4.7	5.9	NA	NA	NA
Total Residential Properties														
Total Number of Residential Properties	2,976	2,976	2,980	2,981	2,984	3	0.1%	202,265	202,309	202,387	202,362	204,295	1,933.0	1.0%
Crime and Safety														
Part 1 Crime Rate per 1,000 Residents	64.2	63.0	71.5	60.8	59.6	-1.2	-2.0%	61.4	63.6	61.8	63.3	60.5	-2.8	-4.5%
Violent Crime Rate per 1,000 Residents	18.8	18.2	20.7	15.6	17.3	1.7	10.6%	15.6	15.1	14.7	14.8	13.7	-1.1	-7.3%
Property Crime Rate per 1,000 Residents	NA	44.8	50.8	43.8	41.1	-2.7	-6.1%	NA	48.6	47.0	47.6	45.9	-1.7	-3.6%
Number of Adult Arrests per 1,000 Residents (Over the age of 18)	--	--	--	--	94.1			--	--	--	--	48.7		
Juvenile Crime														
Juvenile Arrest Rate per 1,000 Juveniles	NA	100.7	NA	NA	NA	--	--	NA	79.2	NA	NA	NA	--	--
Juvenile Arrest Rate for Violent Offenses per 1,000 Juveniles	NA	7.1	NA	NA	NA	--	--	NA	16.6	NA	NA	NA	--	--
Juvenile Arrest Rate for Drug-Related Offenses per 1,000 Juveniles	NA	66.1	NA	NA	NA	--	--	NA	30.3	NA	NA	NA	--	--
Specific Crime Incidents														
Domestic Violence Calls for Service per 1,000 Residents	63.2	63.0	58.9	0.0	0.0	0.0	--	50.5	54.2	52.1	0.0	0.0	0.0	--
Number of Shootings per 1,000 Residents	NA	3.6	4.7	NA	NA	--	--	NA	2.3	2.4	NA	NA	--	--
Number of Gun-Related Homicides per 1,000 Residents	NA	0.6	0.7	1.0	0.5	-0.5	-50.0%	NA	0.2	0.3	0.3	0.3	0.0	-15.0%
Number of Common Assault Calls for Service per 1,000 Residents	NA	131.6	121.1	NA	NA	--	--	NA	86.0	91.4	NA	NA	--	--
Number of Narcotics Calls for Service per 1,000 Residents	NA	287.3	210.6	NA	NA	--	--	NA	90.3	89.7	NA	NA	--	--
Number of Automobile Accident Calls for Service per 1,000 Residents	NA	39.3	41.5	NA	NA	--	--	NA	52.2	51.3	NA	NA	--	--
Student Attendance and Enrollment														
Number of Students Enrolled in 1st - 5th Grade	NA	624	648	636	625	-11	-1.7%	NA	31,234	31,604	31,853	32,006	153.0	0.5%
Number of Students Enrolled in 6th - 8th Grade	NA	329	341	334	329	-5	-1.5%	NA	16,659	16,986	16,817	16,757	-60.0	-0.4%
Number of Students Enrolled in 9th - 12th Grade	NA	510	483	487	443	-44	-9.0%	NA	24,311	23,706	22,950	22,281	-669.0	-2.9%
Number of Students Ever Attended 1st - 5th Grade	597	654	666	660	641	-19	-2.9%	32,735	33,791	32,791	33,054	33,183	129.0	0.4%
Number of Students Ever Attended 6th - 8th Grade	338	349	350	342	330	-12	-3.5%	18,778	17,999	17,463	17,481	17,268	-213.0	-1.2%
Number of Students Ever Attended 9th - 12th Grade	601	552	495	516	454	-62	-12.0%	28,653	26,983	24,707	23,902	22,888	-1,014.0	-4.2%
Student Demographics														
Percent of Students that are African American	97.7	98.2	98.2	97.4	97.1	-0.3	-0.3%	87.3	85.9	85.1	84.5	84.2	-0.4	-0.4%
Percent of Students that are White (non-Hispanic)	0.8	0.7	0.9	1.2	1.2	0.0	-2.3%	7.3	8.2	8.1	8.1	8.1	0.0	-0.5%
Percent of Students that are Hispanic	0.2	0.6	0.6	0.8	1.1	0.2	26.4%	2.9	4.1	4.8	5.6	6.1	0.5	8.9%
Percentage of Students Receiving Free or Reduced Meals	89.8	89.7	82.3	90.6	0.0	-90.6	-100.0%	83.2	82.8	76.2	85.1	0.0	-85.1	-100.0%
Percentage of Students Enrolled in Special Education Programs	18.8	18.5	18.6	18.4	0.0	-18.4	-100.0%	17.3	16.3	16.5	16.2	0.0	-16.2	-100.0%
Student Attendance, Suspensions and Expulsions														
Percent of 1st-5th Grade Students that are Chronically Absent	10.7	18.2	15.0	14.4	14.4	0.0	-0.3%	12.3	16.6	12.7	13.1	15.0	1.9	14.1%
Percent of 6th-8th Grade Students that are Chronically Absent	17.5	20.1	19.4	15.5	14.5	-1.0	-6.1%	16.9	16.7	15.1	13.3	15.2	1.8	13.7%
Percent of 9th-12th Grade Students that are Chronically Absent	43.9	51.6	48.3	41.9	49.8	7.9	18.9%	39.7	42.1	40.4	35.6	38.7	3.1	8.7%
Percentage of Students Suspended or Expelled During School Year	12.0	11.9	13.7	10.1	0.0	-10.1	-100.0%	8.8	9.5	9.6	7.7	0.0	-7.7	-100.0%

Penn North/Reservoir Hill								Baltimore City						
	2010	2011	2012	2013	2014	Change 13-14	% Change	2010	2011	2012	2013	2014	Change 13-14	% Change
Student Performance (Elementary and Middle)														
Kindergarten School Readiness/Ready at 5	NA	66.9	79.3	81.9	0.0	-81.9	-100.0%	NA	66.2	73.1	77.6	0.0	-77.6	-100.0%
Percentage of 3rd Grade Students Passing MSA Math	75.2	80.4	72.9	75.2	34.5	-40.7	-54.1%	77.5	73.3	73.6	68.1	46.8	-21.3	-31.3%
Percentage of 3rd Grade Students Passing MSA Reading	70.2	69.2	66.9	59.0	44.9	-14.1	-23.9%	72.5	69.4	65.5	64.9	55.6	-9.3	-14.3%
Percentage of 5th Grade Students Passing MSA Math	61.1	49.1	68.0	78.9	50.0	-28.9	-36.7%	70.9	64.7	70.4	65.0	42.6	-22.4	-34.4%
Percentage of 5th Grade Students Passing MSA Reading	91.1	73.9	69.7	72.6	83.3	10.7	14.7%	80.4	76.1	75.8	73.6	74.1	0.5	0.7%
Percentage of 8th Grade Students Passing MSA Math	27.4	23.0	24.5	21.0	26.0	5.0	23.8%	31.0	35.1	39.5	37.9	28.7	-9.2	-24.3%
Percentage of 8th Grade Students Passing MSA Reading	49.5	49.5	47.7	58.8	44.6	-14.3	-24.3%	52.0	61.2	58.8	62.0	54.9	-7.1	-11.4%
Student Performance (High School)														
Percentage of Students Passing H.S.A. English	28.7	34.1	28.3	25.8	33.9	8.2	31.7%	37.3	36.2	34.0	32.5	49.4	16.9	51.9%
Percentage of Students Passing H.S.A. Biology	37.4	30.1	26.7	29.1	45.6	16.6	57.0%	42.7	36.2	36.4	36.7	56.0	19.3	52.5%
Percentage of Students Passing H.S.A. Algebra	18.1	21.5	16.2	21.5	29.6	8.1	37.8%	25.9	22.5	21.0	23.6	32.2	8.6	36.4%
Student Dropout and Completion														
High School Dropout/Withdrawal Rate	5.3	5.8	4.8	4.1	2.0	-2.1	-51.3%	3.9	4.2	4.1	2.1	2.0	-0.1	-2.8%
High School Completion Rate	72.7	80.3	71.3	75.4	78.1	2.7	3.6%	78.4	80.3	80.3	79.3	80.7	1.5	1.8%
Student Mobility														
Percent of Students Switching Schools within School Year	NA	8.4	11.2	7.6	9.0	1.4	18.5%	NA	7.2	7.1	7.9	8.0	0.0	0.5%
Youth Labor Force Engagement														
Percentage of Population aged 16-19 in School and/or Employed	68.3	77.9	78.4	78.0	81.9	3.9	5.0%	86.0	87.4	87.9	87.7	88.1	0.3	0.4%
Birth Outcomes														
Teen Birth Rate per 1,000 Females (aged 15-19)	47.1	61.8	79.4	47.1	58.8	11.8	25.0%	51.1	46.6	41.5	36.1	33.8	-2.4	-6.5%
Percent of Births Delivered at Term (37-42 Weeks)	79.3	82.9	86.0	81.9	85.6	3.7	4.5%	86.5	87.4	86.6	87.5	87.3	-0.2	-0.2%
Percent of Babies Born with a Satisfactory Birth Weight	84.3	87.1	84.9	86.1	91.4	5.3	6.1%	88.3	88.4	88.2	88.1	88.5	0.4	0.4%
Percent of Births Where the Mother Received Early Prenatal Care	54.3	62.1	61.6	38.9	49.6	10.8	27.6%	57.0	59.0	62.7	49.5	48.5	-1.0	-2.0%
Lead Poisoning														
Number of Children (aged 0-6) Tested for Elevated Blood Lead Levels	88	70	0	202	130	-72.0	-35.6%	19,702	19,036	18,723	18,535	17,961	-574.0	-3.1%
Percent of Children (aged 0-6) with Elevated Blood Lead Levels	0.0	0.0	0.0	0.0	0.0	0.0	NA	1.6	1.4	1.2	1.2	1.1	-0.1	-8.6%
Life Expectancy and Mortality														
Life Expectancy	NA	69.2	69.9	70.2	71.3	1.2	1.7%	NA	73.5	73.9	73.5	73.8	0.3	0.4%
Infant Mortality	NA	12.8	12.6	14.3	9.4	-4.9	-34.1%	NA	11.7	9.7	10.7	10.4	-0.4	-3.4%
Mortality by Age (1-14 years old)	NA	0.0	0.0	0.0	2.2	2.2	NA	NA	2.8	2.5	1.9	2.1	0.2	8.2%
Mortality by Age (15-24 years old)	NA	25.0	23.5	14.7	10.3	-4.4	-30.0%	NA	13.5	11.9	9.1	10.4	1.4	15.1%
Mortality by Age (25-44 years old)	NA	50.0	50.0	40.7	42.3	1.5	3.8%	NA	27.3	24.0	18.9	23.0	4.1	21.8%
Mortality by Age (45-64 years old)	NA	137.7	130.7	103.3	126.5	23.2	22.4%	NA	117.9	114.1	92.8	117.5	24.8	26.7%
Mortality by Age (65-84 years old)	NA	477.5	444.2	341.5	418.5	77.0	22.6%	NA	393.7	373.8	303.4	379.4	76.0	25.0%
Mortality by Age (85 and over)	NA	1,280.7	1,368.4	1,175.4	1,421.1	245.6	20.9%	NA	1,315.0	1,231.5	1,036.5	1,300.9	264.3	25.5%
Community Built and Food Environment														
Liquor Outlet density (per 1,000 Residents)	0.0	1.0	0.7	0.9	0.6	-0.3	-33.3%	0.0	1.3	1.2	1.1	1.1	-0.1	-7.3%
Fast Food Outlet Density (per 1,000 Residents)	NA	0.3	NA	0.7	NA	NA	NA	0.0	1.4	NA	1.5	NA	NA	NA
Average Healthy Food Availability Index	NA	NA	7.0	NA	NA	NA	NA	NA	NA	10.3	NA	NA	NA	NA

Penn North/Reservoir Hill								Baltimore City							
Social Assistance Programs and Assistance															
Percent of Families Receiving TANF								NA 9.4 11.0 9.8 9.7 -0.1 -1.2%							
Public Art and Events															
Number of Persons with Library Cards per 1,000 residents								NA 299 299 262 449 -187 71.4%							
Number of Event Permits Requested per 1,000 Residents								NA NA NA NA 2.0 NA NA							
Public Art per 1,000 Residents								NA NA NA NA 4.0 NA NA							
Number of Public Murals								NA NA NA NA 4 NA NA							
Art and Culture Economy															
Number of Businesses that are Arts-Related per 1,000 residents								0.4 0.4 0.4 0.4 0.3 -0.1 -25.0%							
Total Employment in Arts-Related Businesses								85 25 25 321 21 -300 -93.5%							
Rate of Businesses in the Creative Economy per 1,000 residents								0.6 0.7 0.7 0.8 0 14.3%							
Total Employment in the Creative Economy								30 33 328 33 -295 -89.9%							
Labor Force Participation and Employment*															
Percent Population 16-64 Employed								-- -- -- -- 50.1 NA NA							
Percent Population 16-64 Unemployed and Looking for Work								-- -- -- -- 12.9 NA NA							
Percent Population 16-64 Not in Labor Force								-- -- -- -- 37.0 NA NA							
Unemployment Rate								-- -- -- -- 20.5 NA NA							
Percent of Adult Population on Parole/Probation								7.7 NA NA 5.3 NA NA							
Educational Attainment (Population Aged 25+)*															
Percent with Less Than a High School Diploma or GED								-- -- -- -- 19.6 NA NA							
Percent with High School Diploma/Some College/Associates Degree								-- -- -- -- 56.1 NA NA							
Percent with a Bachelor's Degree or Above								-- -- -- -- 24.2 NA NA							
Commercial Business Activity															
Total Number of Commercial Properties								145 143 140 142 142 0 0.0%							
Percent of Commercial Properties with Rehab Permits Above \$5,000								6.9 7.0 3.6 2.8 11.3 8.5 300.0%							
Business and Employment															
Total Number of Businesses								246 160 166 189 275 86 45.5%							
Number of Total Jobs Filled by Employees								1,863 1,605 1,177 1,134 923 -211 -18.6%							
Number of Businesses with Under 50 Employees								238 155 161 181 262 81 44.8%							
Percent of Businesses that are 1 year old or less								6.5 11.3 7.2 8.5 10.2 1.7 20.3%							
Percent of Businesses that are 2 years old or less								16.7 16.3 19.9 22.2 18.5 -3.7 -16.5%							
Percent of Businesses that are 4 years old or less								30.1 30.0 30.1 38.1 41.8 3.7 9.8%							
Number of Businesses by Selected Neighborhood Industry								180 113 116 132 204 72 54.5%							
Neighborhood Businesses per 1,000 residents								18.6 11.7 12.0 13.7 21.1 7.4 54.5%							
Total Number of Employees by Selected Neighborhood Industry								1,322 533 492 869 1,262 393 45.2%							
Banking															
Number of Banks and Bank Branches per 1,000 Residents								NA 0.0 0.1 0.0 0.1 0.1 NA							
Regional Dynamics															
Percentage of Residents Commuting to Work Outside of City								49.9 NA 43.2 52.7 52.7 0.0 0.0%							

* Previous data using the American Community Survey for 2006-2010, 2007-2011, 2008-2012, 2009-2013 available upon request.

Penn North/Reservoir Hill								Baltimore City						
	2010	2011	2012	2013	2014	Change 13-14	% Change	2010	2011	2012	2013	2014	Change 13-14	% Change
Sanitation														
Rate of Dirty Streets and Alleys Reports per 1,000 Residents	84.2	91.8	127.5	94.6	68.3	2.8	3.0%	75.8	65.3	70.5	52.6	52.8	0.2	0.4%
Rate of Clogged Storm Drain Reports per 1,000 Residents	4.4	5.1	7.8	7.8	2.3	2.7	53.1%	4.9	6.4	6.2	6.2	3.2	-3.0	-48.4%
Transportation*														
Percent of Population that Drove Alone to Work	--	--	--	--	49.3	NA	NA	--	--	--	--	62.1	NA	NA
Percent of Population that Carpool to Work	--	--	--	--	17.5	NA	NA	--	--	--	--	10.1	NA	NA
Percent of Population that Uses Public Transportation to Get to Work	--	--	--	--	24.7	NA	NA	--	--	--	--	18.7	NA	NA
Percent of Population that Walks to Work	--	--	--	--	4.3	NA	NA	--	--	--	--	6.9	NA	NA
Percent of Population Using All Other Means of Transit to Work	--	--	--	--	4.1	NA	NA	--	--	--	--	2.2	NA	NA
Percent of Population with Travel Time to Work of 0-14 Minutes	--	--	--	--	18.1	NA	NA	--	--	--	--	17.0	NA	NA
Percent of Population with Travel Time to Work of 15-29 Minutes	--	--	--	--	36.7	NA	NA	--	--	--	--	38.7	NA	NA
Percent of Population with Travel Time to Work of 30-44 Minutes	--	--	--	--	23.9	NA	NA	--	--	--	--	24.3	NA	NA
Percent of Population with Travel Time to Work of 45 Minutes Plus	--	--	--	--	21.4	NA	NA	--	--	--	--	20.0	NA	NA
Walk Score	NA	74.2	NA	NA	NA	NA	NA	NA	52.4	NA	NA	NA	NA	NA
Percent of Households with No Vehicles Available	--	--	--	--	43.3	NA	NA	--	--	--	--	30.0	NA	NA
Environment and Green Space														
Percent of Area Covered by Trees	NA	42.9	NA	NA	NA	NA	NA	NA	27.4	NA	NA	NA	NA	NA
Number of Trees of Planted	--	--	--	55.0	292.0	237.0	430.9%	--	--	--	6194	5185	-1009	-16.3%
Number of Community Managed Open Spaces	NA	35	NA	NA	NA	NA	NA	NA	918	NA	NA	NA	NA	NA
Water Use	NA	17.0	NA	NA	NA	NA	NA	NA	16.0	NA	NA	NA	NA	NA
Energy and Weatherization														
Percent of Residences Heated by Utility Gas*	--	--	--	--	60.2	NA	NA	--	--	--	--	64.7	NA	NA
Percent of Residences Heated by Electricity*	--	--	--	--	33.4	NA	NA	--	--	--	--	26.6	NA	NA
Percent of Homes Weatherized	0.2	0.1	0.1	0.3	0.0	-0.2	-335.5%	0.5	1.1	0.6	0.5	0.3	-0.2	-44.7%
Community Assets and Engagement														
Percent of Population (18+) Who are Registered to Vote	80.3	NA	83.0	NA	81.2	NA	NA	75.0	NA	74.7	NA	76.9	NA	NA
Percent Population (18+) Who Voted in the General Election	42.9	NA	58.8	NA	36.5	NA	NA	44.4	NA	51.5	NA	37.3	NA	NA

* Previous data using the American Community Survey for 2006-2010, 2007-2011, 2008-2012, 2009-2013 available upon request.

For more information on these indicators, including definitions and downloads, please visit our website at:

<http://www.bnaiif.org>