

Baltimore Neighborhood Indicators Alliance

Data-Driven Decision Making in West Baltimore for Smart Technology Planning



State Center Community

April 16, 2018

Seema Iyer, Director
Cheryl Knott, GIS Project Manager

Smart Cities Planning Grant

- ▶ Project Led by the University of Maryland, with Morgan State, Johns Hopkins and University of Baltimore
- ▶ How can “smart technology” help improve the quality of life in West Baltimore?
- ▶ **What is Smart Technology?**
 - ▶ Sometimes it’s about using new technology (sensors, mobile applications, etc)
 - ▶ Sometimes it’s about using existing technology—smarter
- ▶ **Goals for this meeting**
 - ▶ Understand how State Center neighborhoods use data about the area
 - ▶ What are the community’s concerns and issues based on existing information
 - ▶ What kinds of information gaps exist
 - ▶ How would you access data in the future

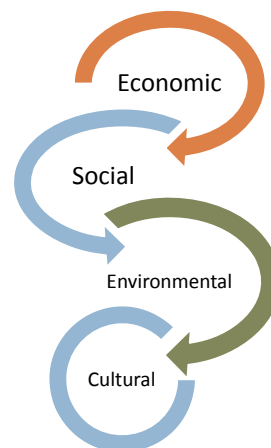
About BNIA

- ▶ Non-profit started nearly years ago by local stakeholders, now based within Jacob France Institute at University of Baltimore
- ▶ “One-stop-shop” for *comprehensive*, non-partisan data and training
 - ▶ Multiple topic areas
 - ▶ Data over time (2000 - 2018)



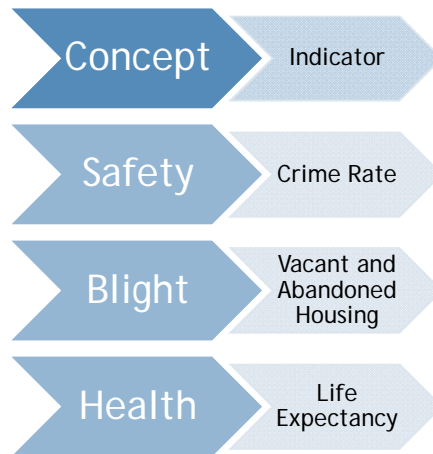
Community Indicators

- ▶ Individual statistics, that when combined, provide a picture of what is happening in a community
 - ▶ Ex. Crime rate, unemployment rate, median household income, life expectancy, etc.
- ▶ When tracked over time, indicators can provide insight to the overall direction of a community
 - ▶ Is crime getting better or worse? Are more people finding jobs? Are there fewer vacant and boarded up houses?
- ▶ Used for setting goals and tracking progress
 - ▶ Did an intervention strategy work? How does the neighborhood compare to the city as a whole?



Indicators as a Proxy for Community Issues

- ▶ Indicators calculated from data help quantify broader community-based issues.



What is Data?

- ▶ Surveys
- ▶ Observations
- ▶ Newspapers/Archives
- ▶ Census
- ▶ Big Data
 - ▶ Transactions made through some electronic interface (i.e. credit card swipes)
- ▶ Administrative Data
 - ▶ Lists of interactions between citizens and the government

BNIA-JFI Data Sources

Administrative Data

- ▶ Public School System
- ▶ Police Department
- ▶ Baltimore Housing
- ▶ Department of Public Works
- ▶ Department of Transportation
- ▶ CitiStat
- ▶ Board of Elections

Publicly-Available Open Data

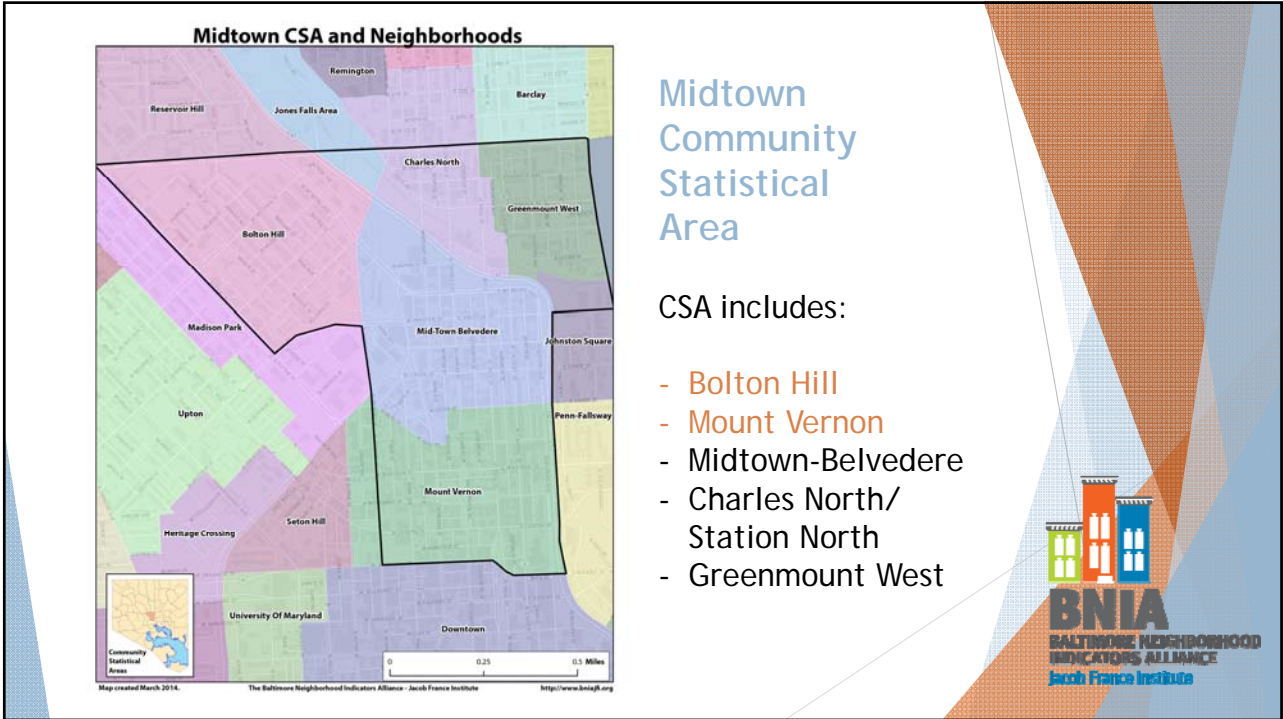
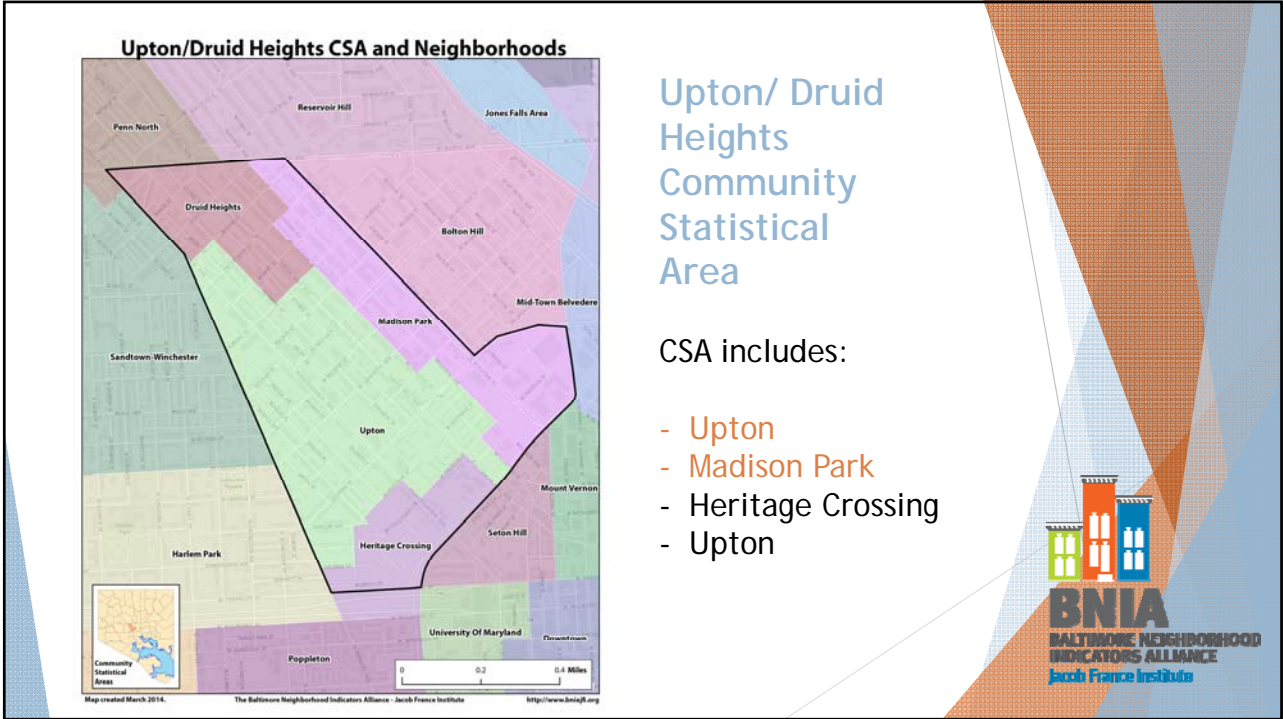
- ▶ Open Baltimore
(<http://data.baltimorecity.gov>)
Housing, CitiStat, crime
- ▶ American FactFinder
(<http://factfinder.census.gov>)
Demographics
- ▶ Maryland Judiciary Case Search System
(<http://casesearch.courts.state.md.us/casesearch/>)
Foreclosures



Vital Signs

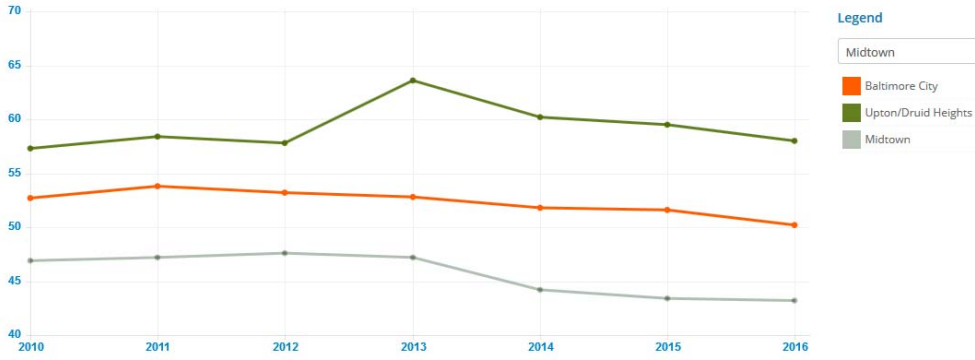
- ▶ Yearly report of our comprehensive indicators; *Vital Signs 16* released on April 11, 2018 with data through 2016
- ▶ Over 160 measures, over 50 sources
- ▶ Topic areas:
 - ▶ Census Demographics
 - ▶ Housing and Community Development
 - ▶ Children and Family Health and Well-Being
 - ▶ Crime and Safety
 - ▶ Workforce and Economic Development
 - ▶ Arts and Culture
 - ▶ Education and Youth
 - ▶ Sustainability





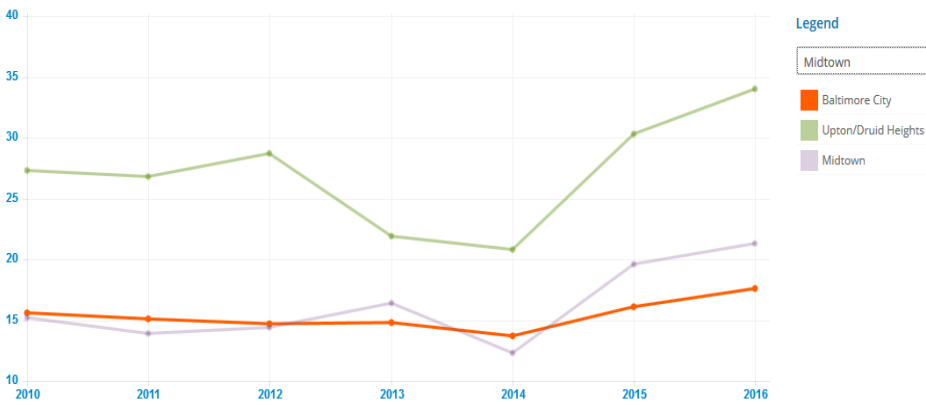
What's in Your Profile?

Affordability Index - Rent



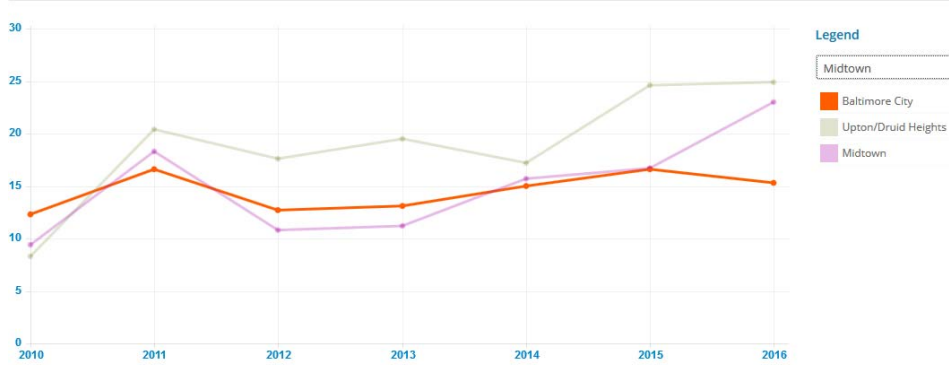
What's in Your Profile?

Violent Crime Rate per 1,000 Residents



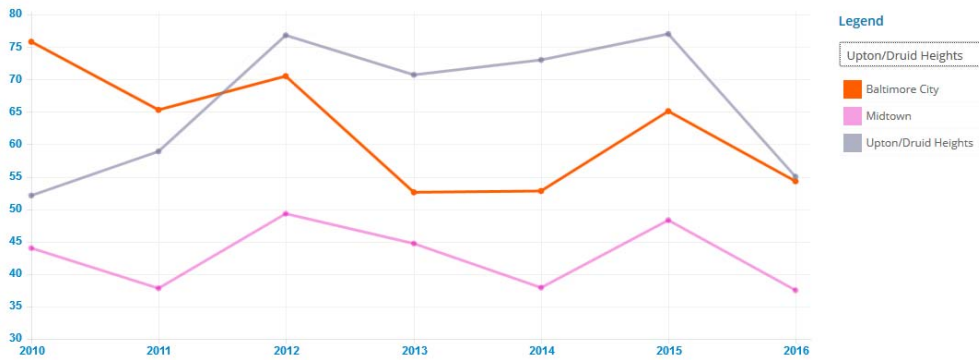
What's in Your Profile?

Percent of 1st-5th Grade Students that are Chronically Absent (Missing at least 20 days)



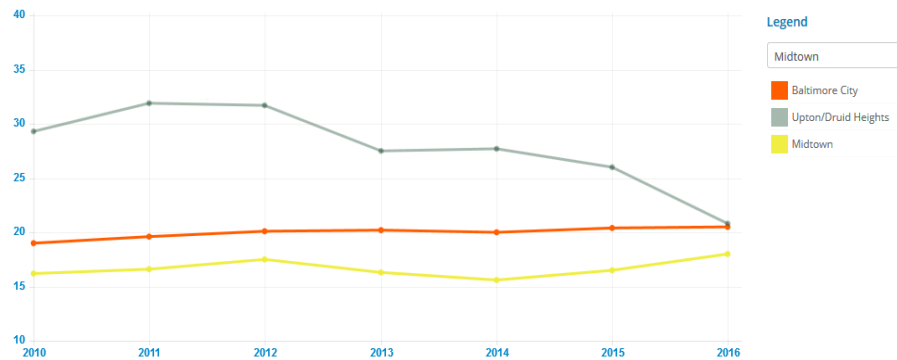
What's in Your Profile?

Rate of Dirty Streets and Alleys Reports per 1,000 Residents



What's in Your Profile?

Percent of Employed Population with Travel Time to Work of 45 Minutes and Over



Next Steps

▶ Breakout Groups

- ▶ What would you like to improve in the neighborhood?
- ▶ What additional data would you like to see?

▶ Next Meeting

- ▶ Hands on Workshop with more specific data for SCNA neighborhoods
- ▶ Ideas for smart technology based on community concerns

Contact

<http://www.bniajfi.org>

bnia-jfi@ubalt.edu

@bniajfi
Twitter/Facebook

