

State of Maryland Open Data Overview

The program, the datasets and how to use the data.

Presenters

From the DoIT Open Data Team

- J.B. Churchill: Technology Platform Manager,
jb.churchill@maryland.gov
- Mark Corser: Senior Data Analyst,
markj.corser@maryland.gov
- Matthew Smeriglio: Open Data Intern,
matthew.smeriglio@maryland.gov

History of Open Data in Maryland

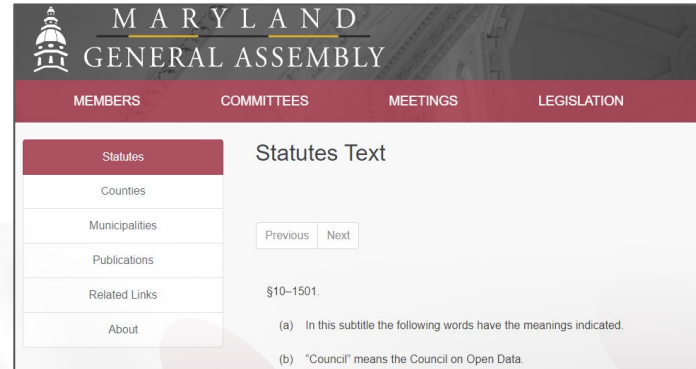
Precursors:

Open Data Act

- Federal Open Data Policy
- Public Information Act 10-901

Open Data Council

Program Development

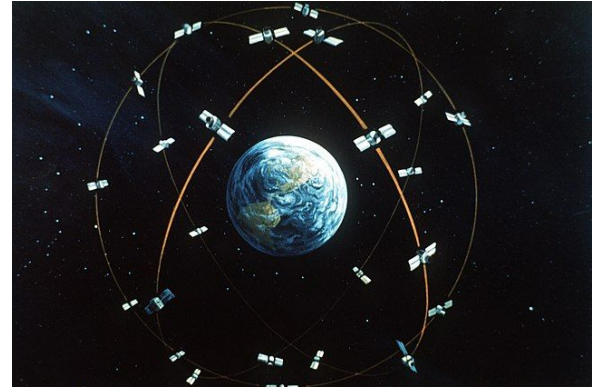


History of Open Data in Maryland

Open Data Act

Open Data Council

Program Development



Both images: NASA, Public domain, via Wikimedia Commons

History of Open Data in Maryland

Open Data Act Sections
10-1501 - 10-1504

Open Data Council

Program Development



Open Data in Maryland (Today)

Program Staff Responsibilities

- Support Agencies and Council Workgroups
- Quarterly “Open Data Council” Meetings
- Annual Reporting
- **Development of the Program**



Open Data Act

Open Data Council

Program Development

- Strategic Planning
- Data Freshness
- Administration
- Outreach & Training

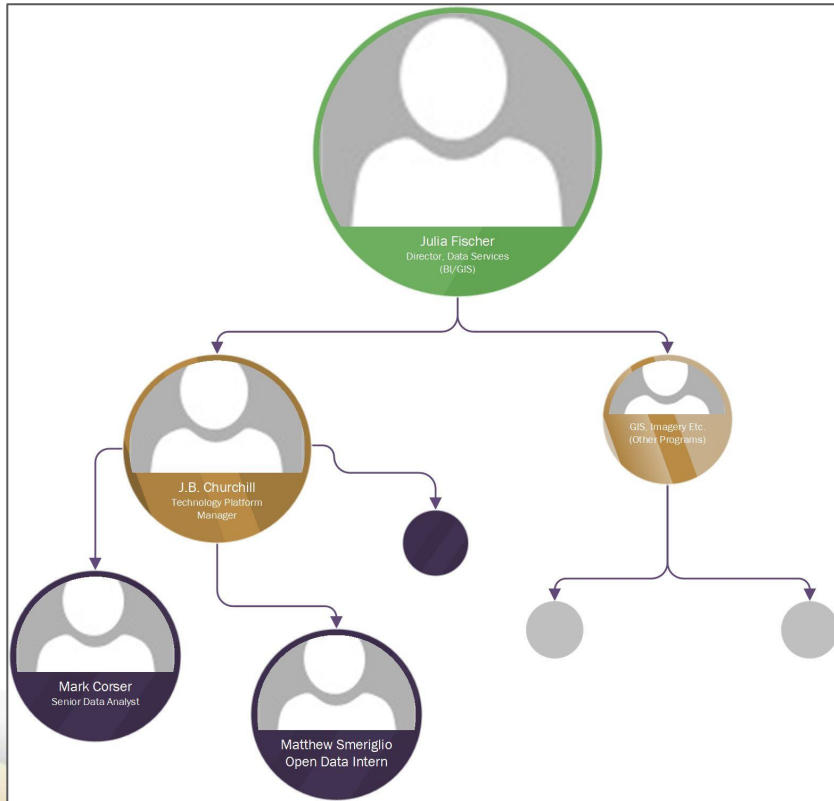
Involves systematic planning, implementation and evaluation of the program and collaboration

Benefits of Open Data

1. Facilitates citizen engagement
2. Increases transparency
3. Informs decision making
4. Reduces expenses
5. Spurs entrepreneurship & application development
6. Does the right thing



DoIT Open Data Program (initiatives)



Maryland's GIS Data

Maryland's public GIS data is found on iMap, the state's GIS data catalog.

Download data in a variety of formats, or connect directly to a REST endpoint.

<https://data.imap.maryland.gov/>



[illegible]

Maryland's Open Data Portal provides access to the state's *non-geographic* data.

- Manage/edit/download datasets
- Create views and subsets of datasets
- Design data visualizations



Maryland
DEPARTMENT OF
INFORMATION TECHNOLOGY

Larry Hogan | Governor | **Boyd K. Rutherford** | Lt. Governor | **Michael G. Leahy** | Secretary | **Lance Schine** | Deputy Secretary

Accessing the State's Data

Everything on iMap is completely open.

- If you wish to dig deeper into the data, an ArcGIS Online account is free.

For the Open Data Portal:

- MD employees: <https://imap.maryland.gov/pages/open-data-account-request>
- External users: <https://opendata.maryland.gov/signup>

Data Freshness Initiative

Our goal is to keep Maryland's open data:

- ❑ Clean
- ❑ Current
- ❑ Relevant



Using the Data Freshness Report, we can identify datasets that don't adhere to open data best practices.

How do we maintain Data Freshness?

About this Dataset [Watch this Dataset](#) [Mute Dataset](#)

Updated
February 10, 2022

Data Last Updated: May 25, 2021
Metadata Last Updated: February 10, 2022

Date Created: May 25, 2021

Views: **66** Downloads: **41**

Data Provided by: Maryland Department of Budget Management
Dataset Owner: Conrad.Schaefer@maryland.gov
[Contact Dataset Owner](#)

Agency
State Agency Performing Data Updates: Department of Information Technology

GIS Download
Place Keywords: Maryland

Jurisdiction
Jurisdiction: State of Maryland

Time Period
Update Frequency: Annually
Time Period of Content: FY2017 - FY2022
Date Metadata Written: June 2, 2021

Topics
Category: Budget
Tags: budget, dbm, funding, appropriations, department of budget and management, operating budget

Licensing and Attribution
License: Public Domain
Source Link: <https://dbm.maryland.gov/budget/Pages/operbudhome.aspx> [Show Less](#)

- Are there missing values?
- Is the metadata in accordance with published standards and policy?
- Is there additional information that should be added?
- Is there data that we are legislatively mandated to publish?

What does success look like?

We have met with 29 agencies to refresh their public data and have supported many of them in adding, editing, and managing their public-facing data (and metadata) in accordance with agency policies and legislative mandates.



...and more!

Open Data Portal Demos

opendata.maryland.gov