

Enhancing Baltimore's wilderness using open data to achieve forest preservation

Thayer A. Young



FRIENDS OF GWYNNNS FALLS
LEAKIN PARK



OLD-GROWTH FOREST NETWORK

7/18/2022 presented at BNIA Data Week 2022

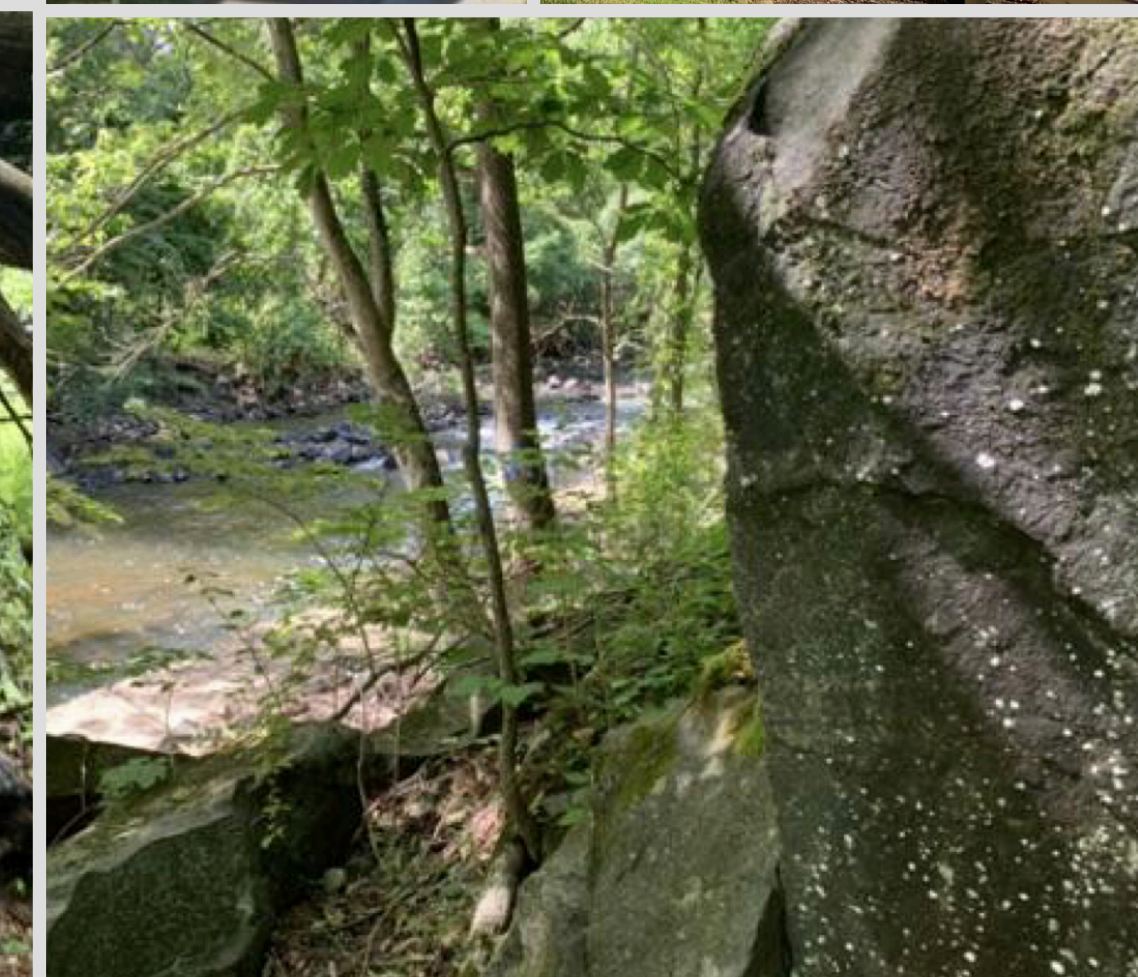
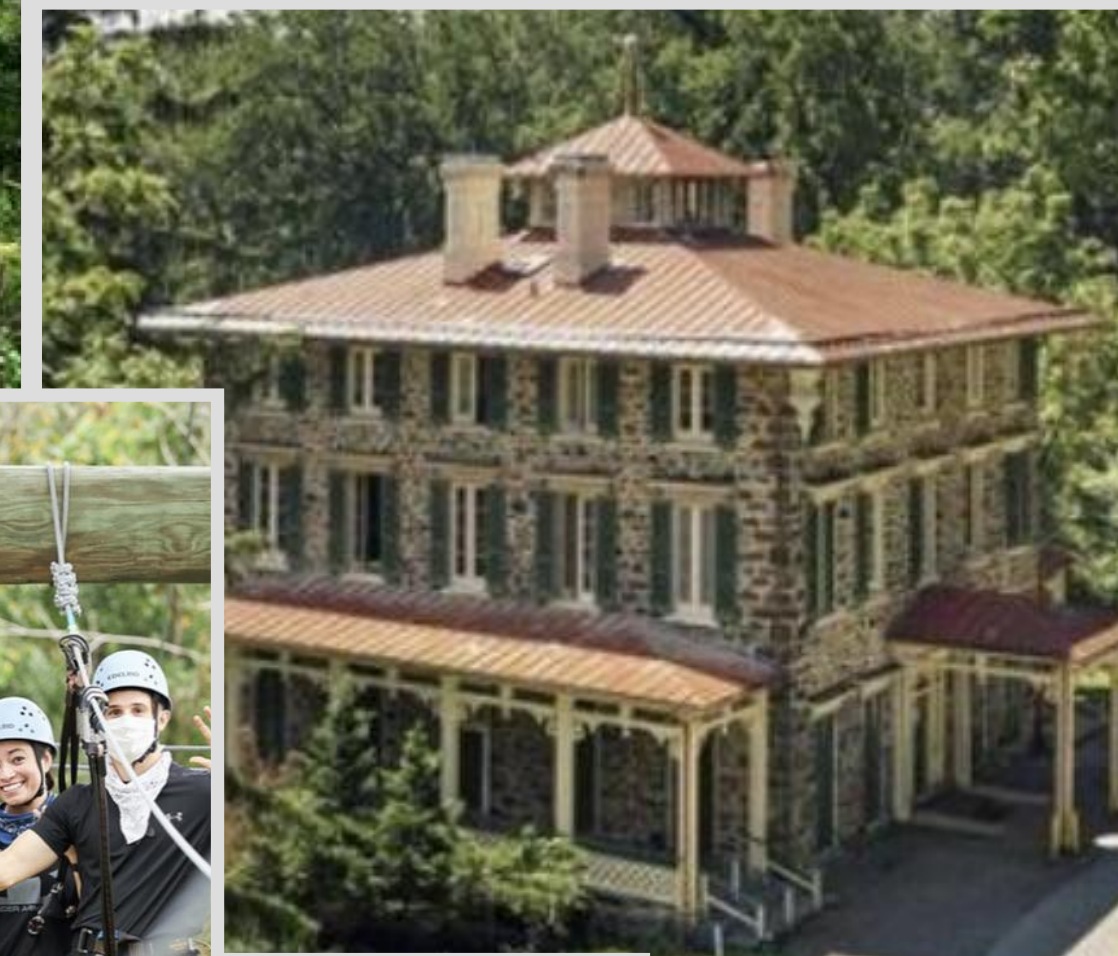
To download a PDF of this presentation:
https://cicadagis.com/data_week.html

Outline

- Gwynns Falls/Leakin Park
 - Friends of Gwynns Falls Leakin Park
- Old-Growth Forest Network
- A Forest Preserve in Baltimore?
- Three examples of how data are used to advance the Forest Preserve
 - High Resolution Land Cover → Rationale for preserving the forest
 - OpenStreetMap → Park visitor experience and outreach
 - Land records, old maps → History of the park
- Resources

Gwynns Falls/Leakin Park

- Baltimore's wilderness park
- One of the largest municipally owned urban forests on the East Coast
 - 999.3 acres of park
 - 842 acres of forest
- 18 miles of trails



Friends of Gwynns Falls Leakin Park

- All volunteer
- Board members are from the surrounding communities
- Voice of the community → Recreation and Parks
- Activities include:
 - Trail maintenance
 - Cleanups
 - Invasive plant removal (TreeBaltimore certified)
 - Organizing events



Overview of the

Old-Growth Forest Network

The OGFN mission is to designate

One forest in every county in the USA.

Each forest must be

Open to the public,

will

Never to be logged again,

and have a

Network of people inspired to protect it.

OGFN is the

Only national organization

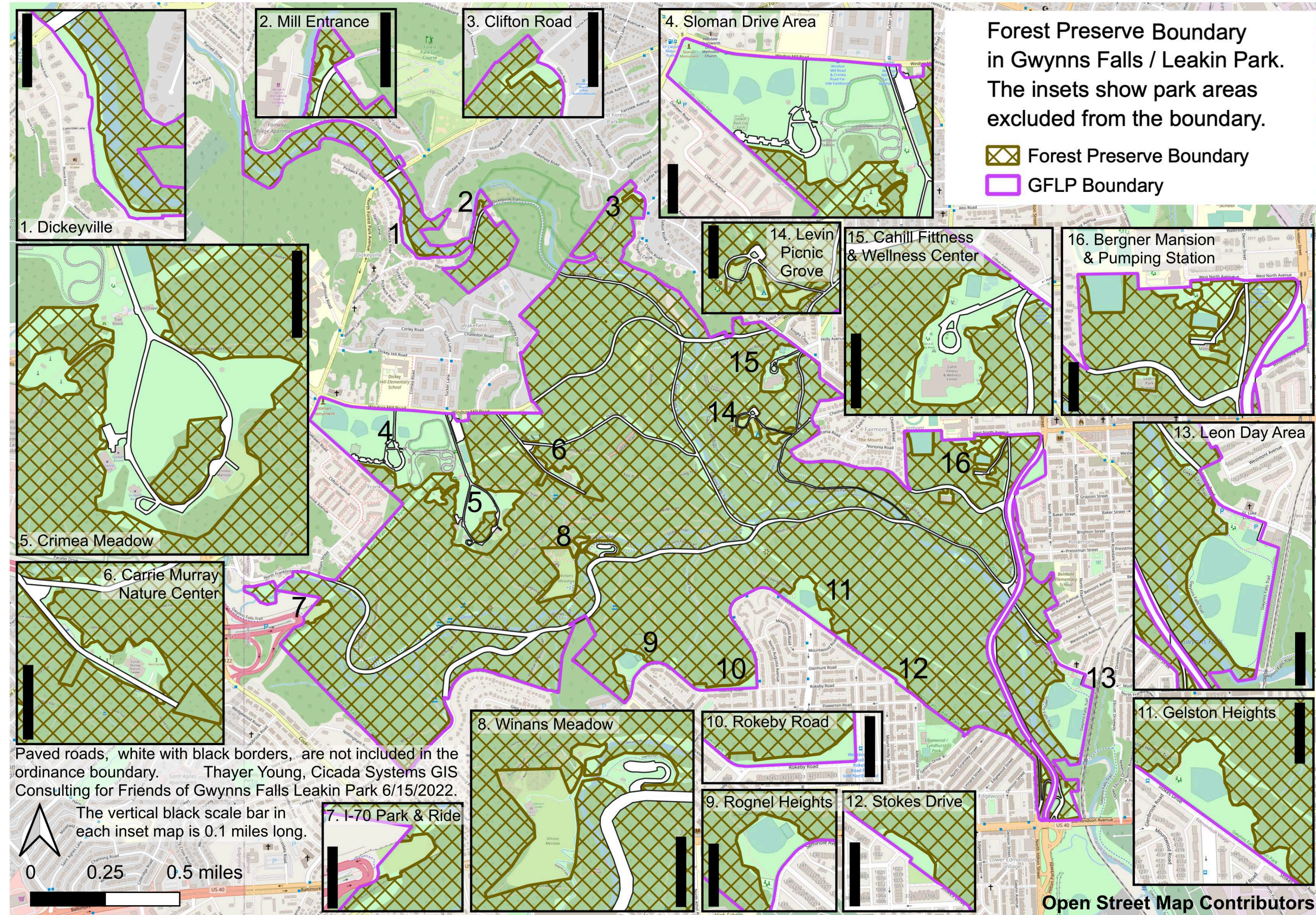
focused solely on

Identifying, protecting & restoring
Old-Growth Forests.

A Forest Preserve for Baltimore?

What?

- FoGFLP & OGFN propose:
- Gwynns Falls/Leakin Park
 - all 842 acres of forest (brown crosshatched area)
- Protect the forest from
 - logging
 - development
- In perpetuity (forever)
- Allow maintenance & repairs
 - existing structures
 - roads
 - utility lines



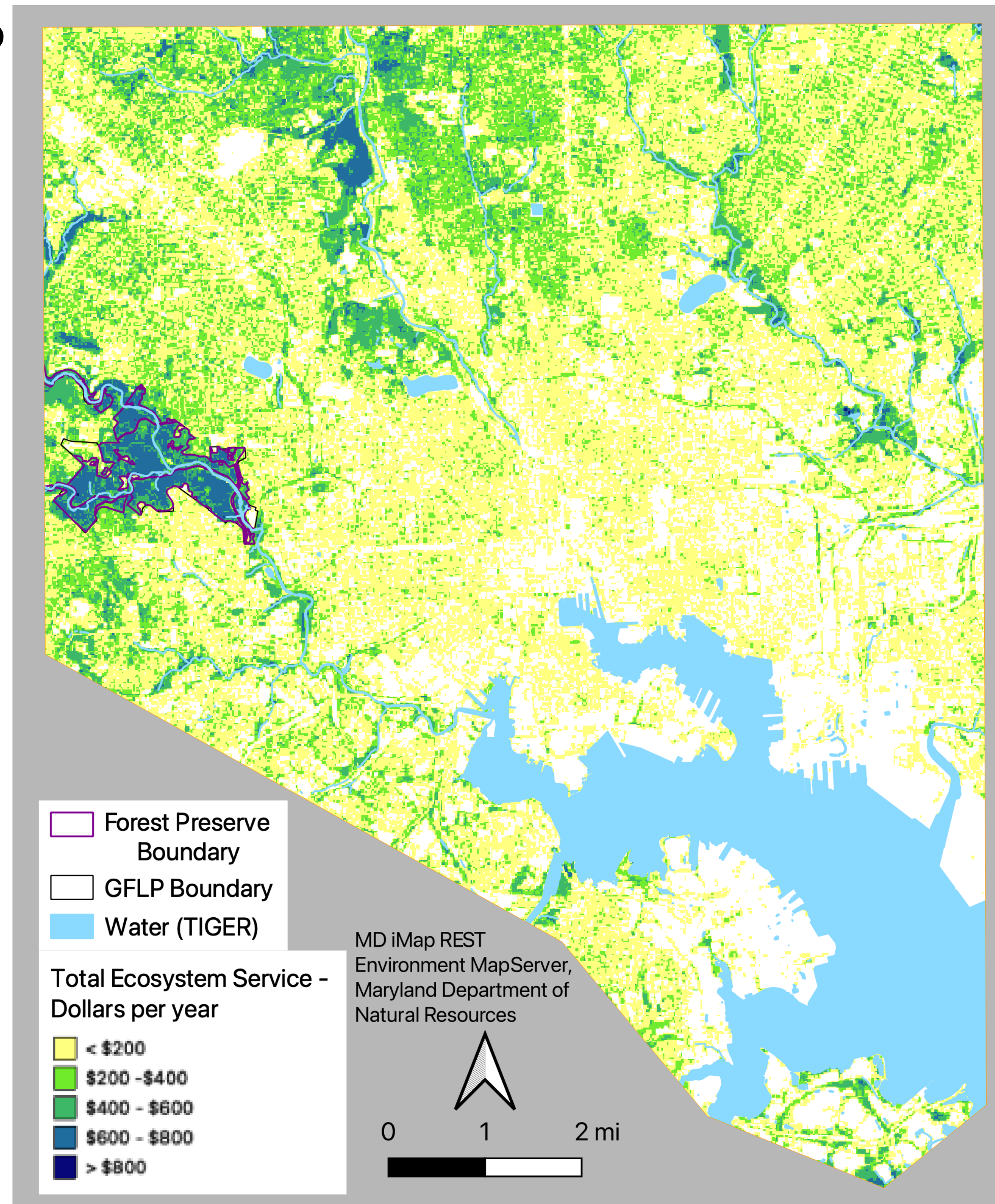
A Forest Preserve for Baltimore?

Why?

- So Baltimore can join the Old-Growth Forest Network
 - national attention
 - tourism
- To GUARANTEE future generations a natural place for:
 - outdoor activities
 - education
- A critical habitat for wildlife, especially birds
- The city's "green lungs" cool and clean the air
- A stream valley that absorbs and filters stormwater
- \$2.3 Million of ecosystem services per year
 - Maryland DNR, Greenprint, Parcel Evaluation Tool
Elliott Campbell, PhD, Rachel Marks
- Ecosystem Services (total of):

Net Carbon Sequestration
Groundwater Recharge
Nutrient Removal Potential
Flooding and Stormwater Mitigation Potential
Surface Water Protection
Wildlife and Biodiversity Potential

Removal of:
Carbon Monoxide
Nitrogen Dioxide
Ozone
Particulate Matter 10
Particulate Matter 2.5
Sulfur Dioxide



Data Examples

and how to use them to advance the Forest Preserve

- High Resolution Land Cover → Rationale for preserving the forest
- OpenStreetMap → Park visitor experience and outreach
- Land records, old maps → History of the park

High Resolution Land Cover

→ Rationale for the Forest Preserve

Chesapeake Bay Program

- Chesapeake Conservancy
 - Conservation Innovation Center
- University of Vermont
- 1 meter Land Cover and Land Use
- How to get the data:

1. <https://cicgis.org/portal/home/gallery.html>

2. On the top row click on

[CBP Land Use/Land Cover Data Project](#)

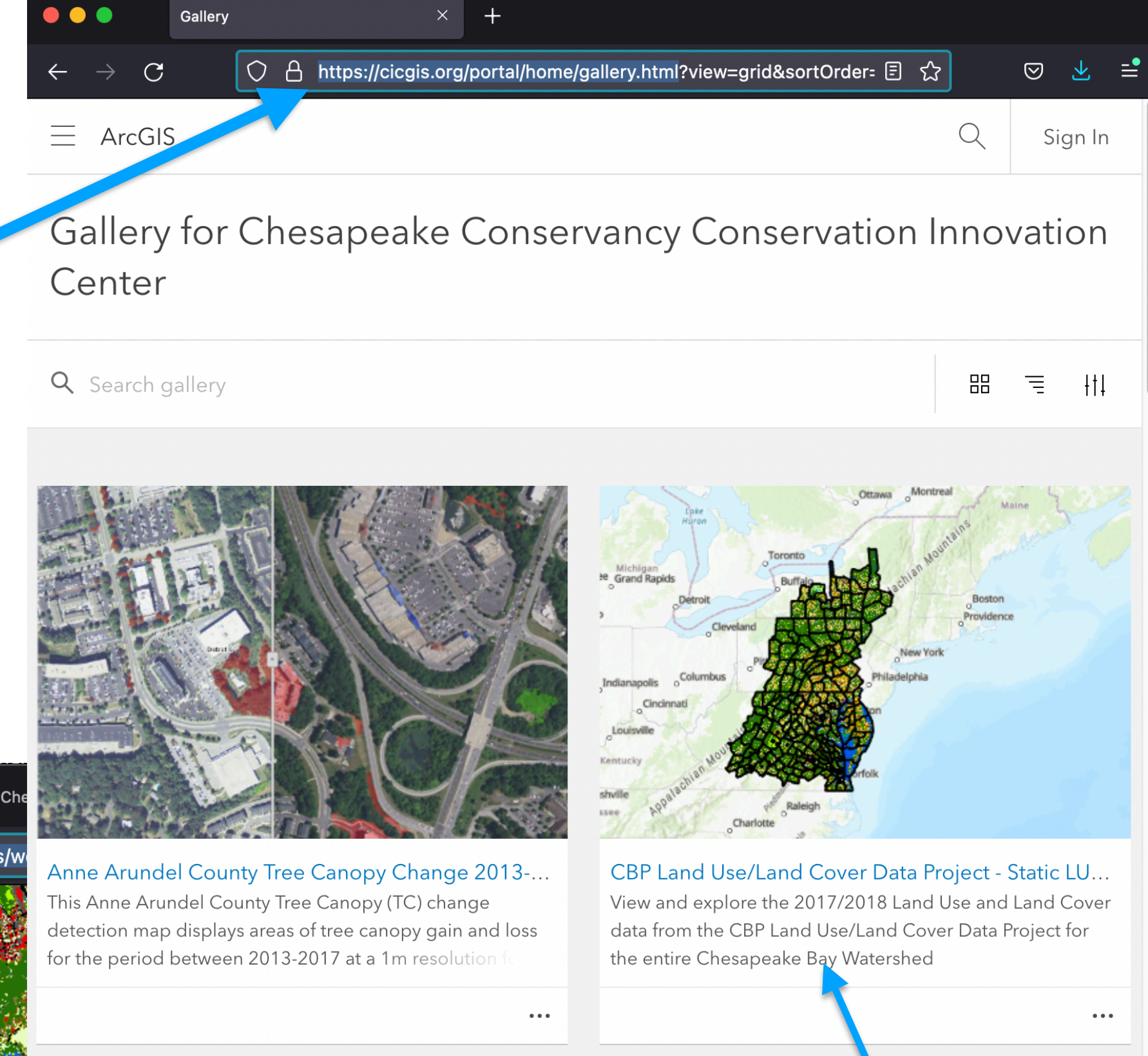
3. In the viewer click on Baltimore in the map

4. Then choose a download link from the popup

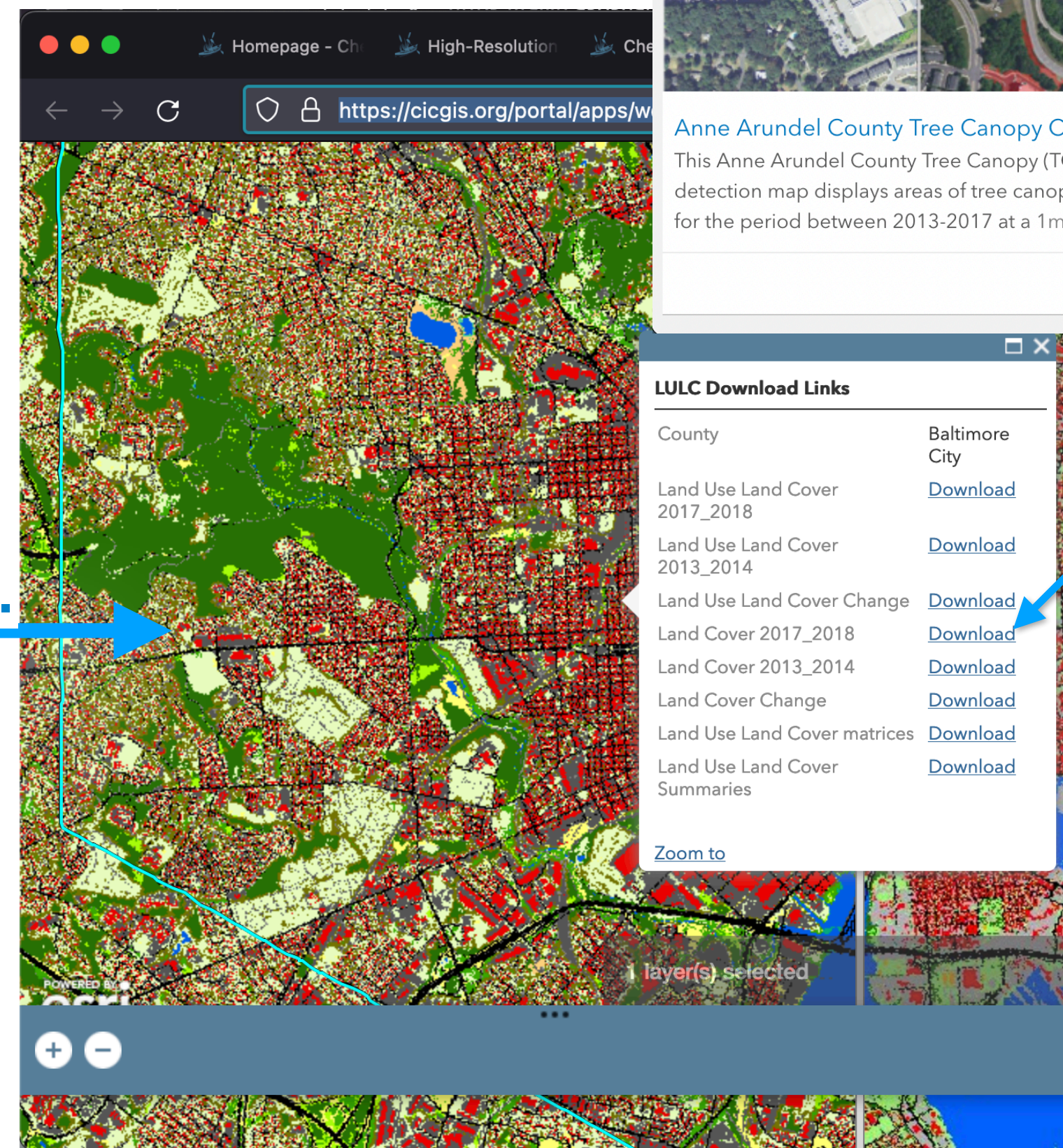
- e.g. Land Cover 2017_2018

Find more information [here](#).

1.



3.



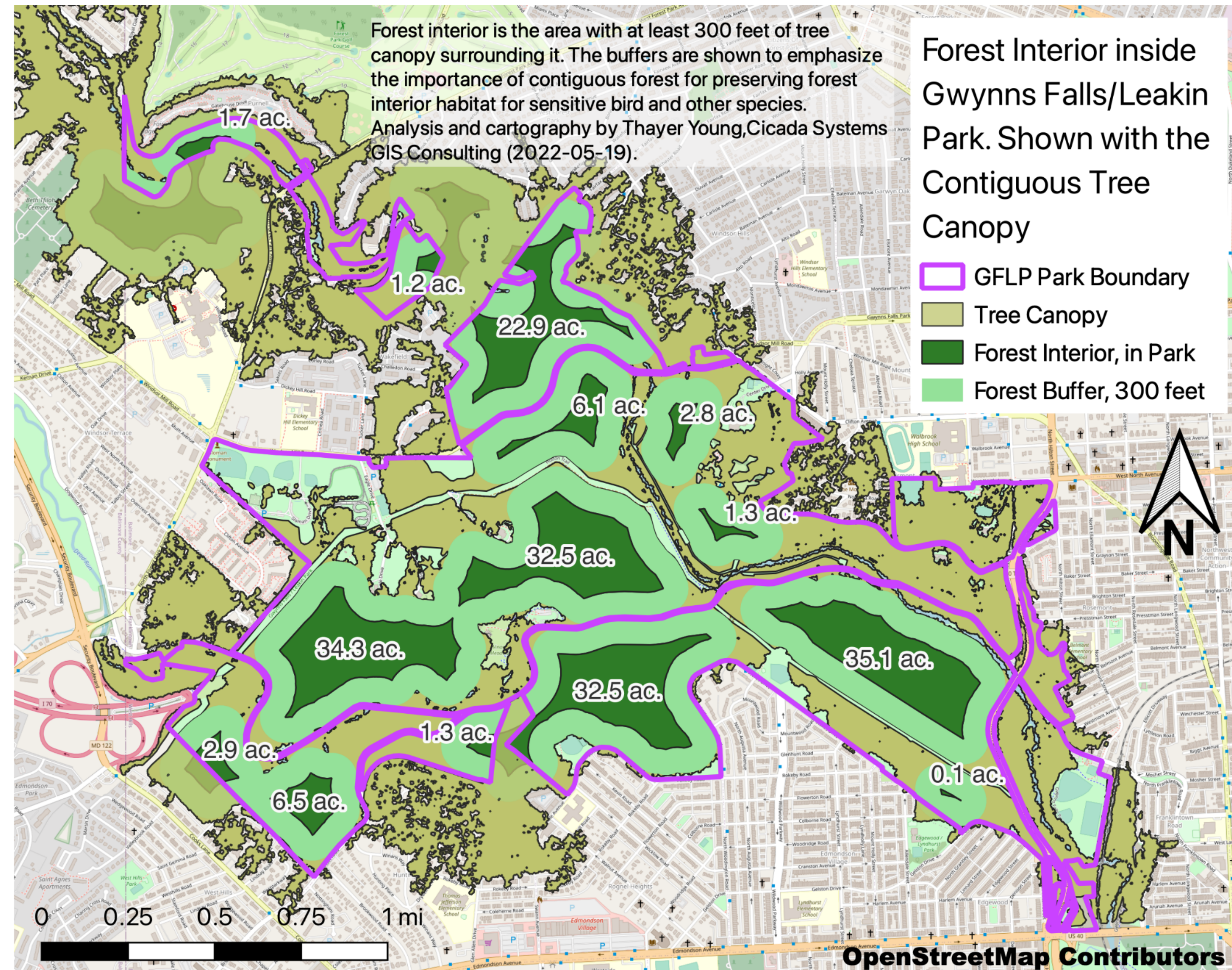
4.

2.

- 1 meter Land Cover
- 12 classes, for example:
 - Tree canopy
 - Tree canopy over:
 - Building
 - Road
 - Other impervious
 - Wetlands
- Land Use has 42 subclasses

High Res Land Cover → Rationale for the Forest Preserve

- Sensitive birds need forest interior
 - To nest & breed
- Forest Interior
 - The deep forest
 - Sensitive birds need large areas of intact forest
- Roads and pipelines
 - Interrupt the interior
 - Disturb sensitive species
- Pipeline projects
 - BGE
 - Gas pipeline
 - Cut down 16 acres of forest
 - DPW
 - Sanitary sewer
 - 2.9 acres
 - Old-Growth Forest Network
 - Postponed Baltimore's admission
- Preserve the remaining interior and its buffer



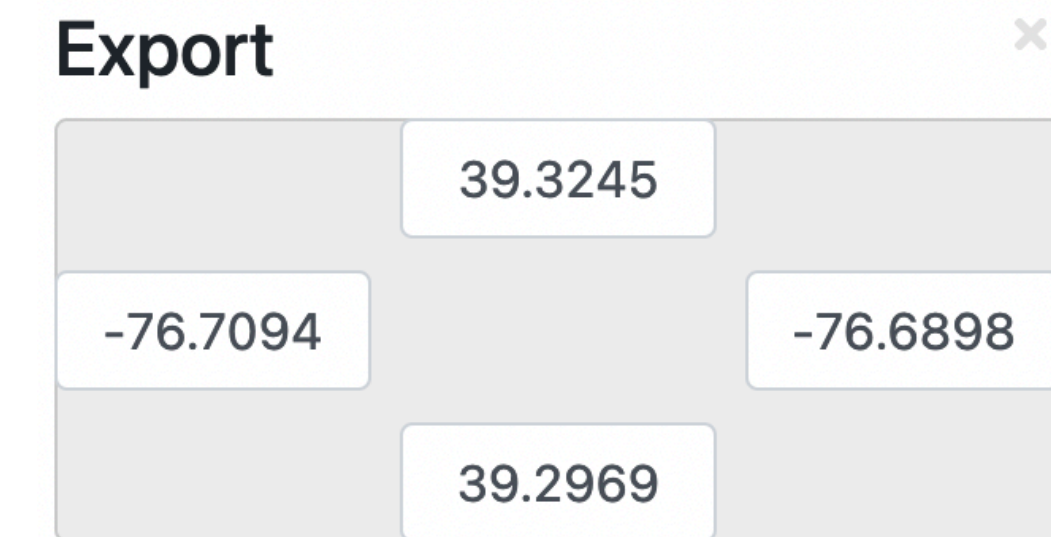
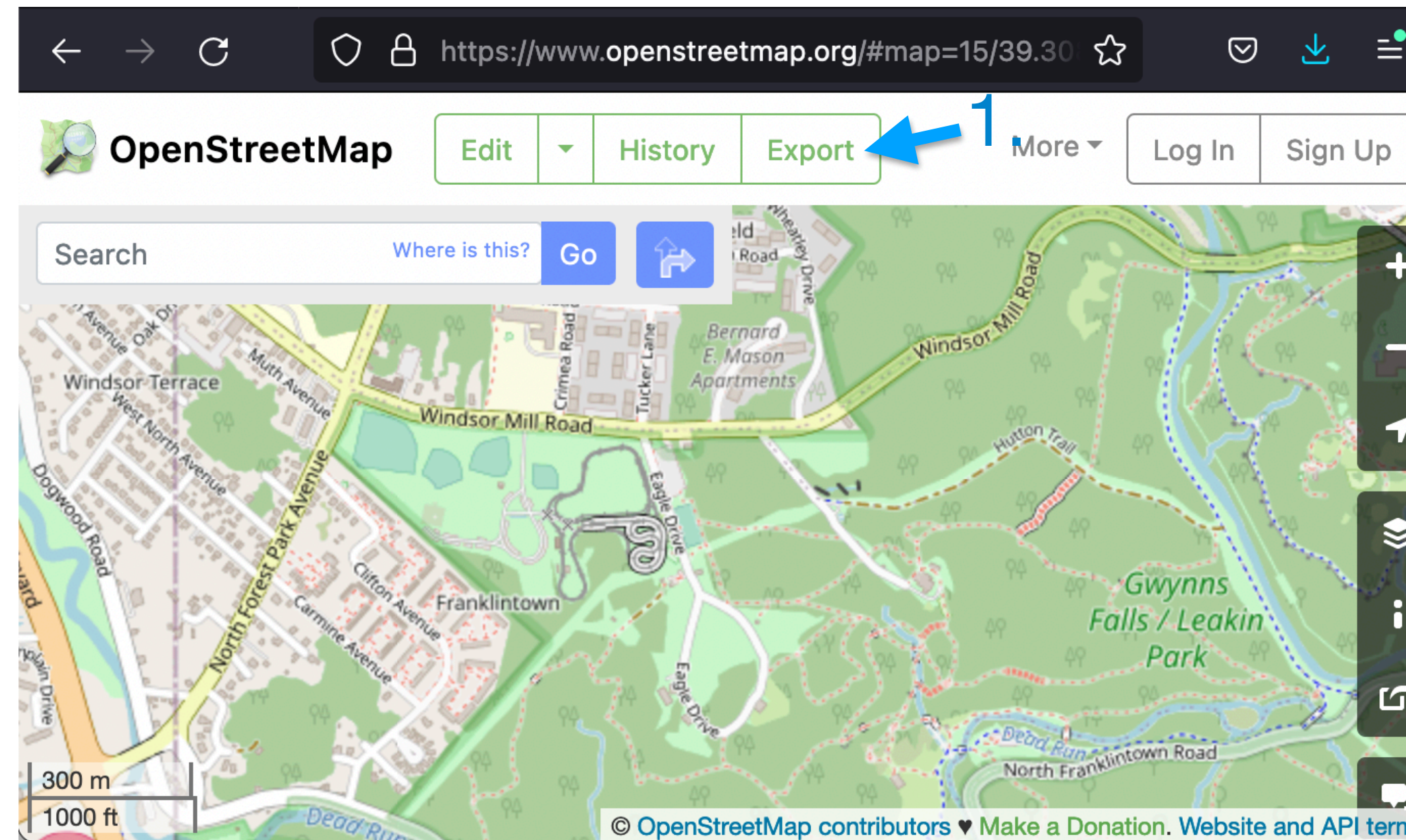
Data Examples

and how to use them to advance the Forest Preserve

- High Resolution Land Cover → Rationale for preserving the forest
- OpenStreetMap → Park visitor experience and outreach
- Land records, old maps → History of the park

OpenStreetMap → Park visitor experience and outreach

- The Wikipedia of maps
 - Anyone can edit
 - But data can have gaps
 - Better in urban areas
 - How to get the data:
 - <https://www.openstreetmap.org>
 - Search or zoom to a small area
1. Click Export
 2. Click Export again
 3. You get:
 - a save dialog if it is small enough
 - an error message if it's too big



Manually select a different area

Licence

OpenStreetMap data is licensed under the [Open Data Commons Open Database License \(ODbL\)](#).



If the above export fails, please consider using one of the sources listed below:

Overpass API

Download this bounding box from a mirror of the OpenStreetMap database

Planet OSM

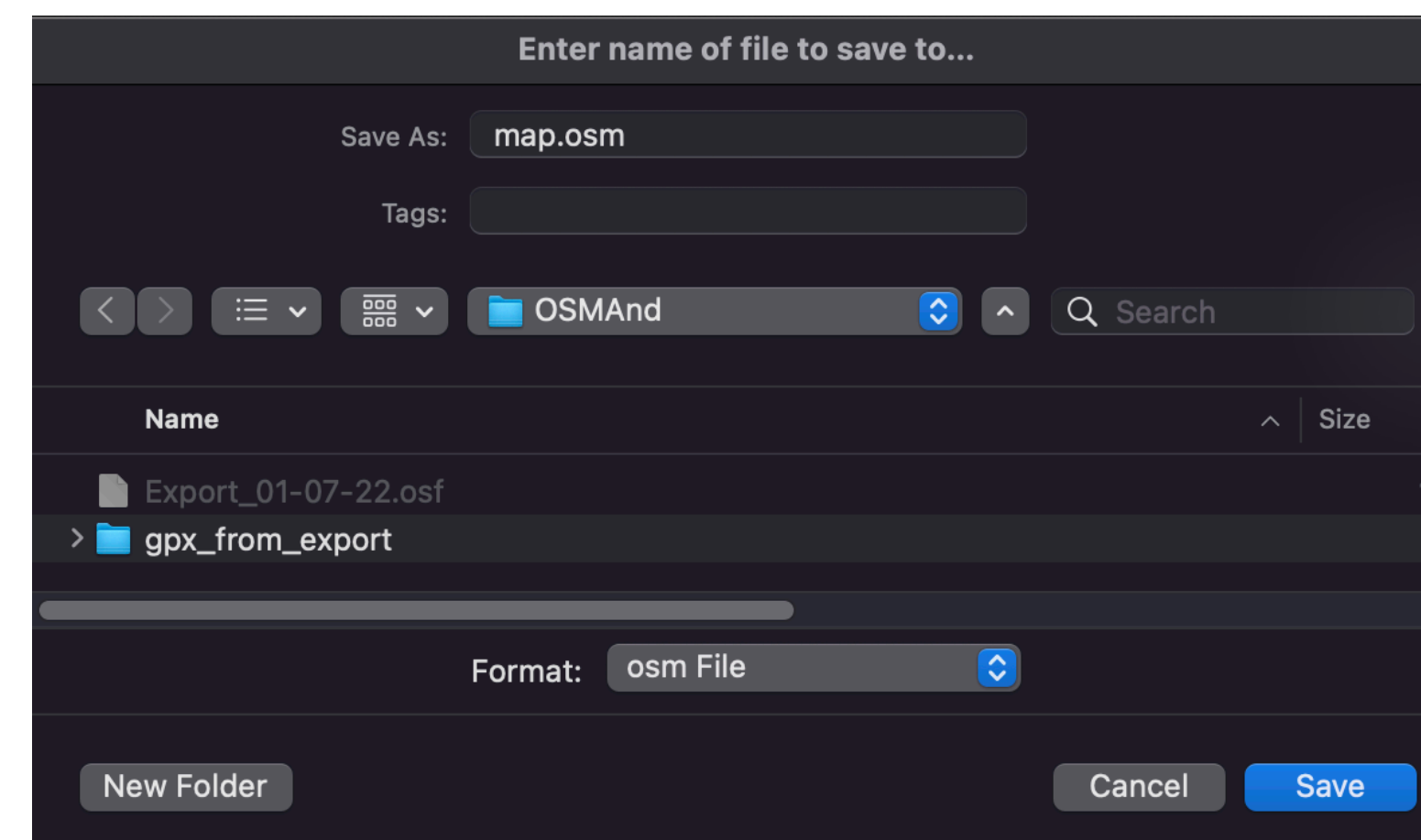
Regularly-updated copies of the complete OpenStreetMap database

Geofabrik Downloads

Regularly-updated extracts of continents, countries, and selected cities

Other Sources

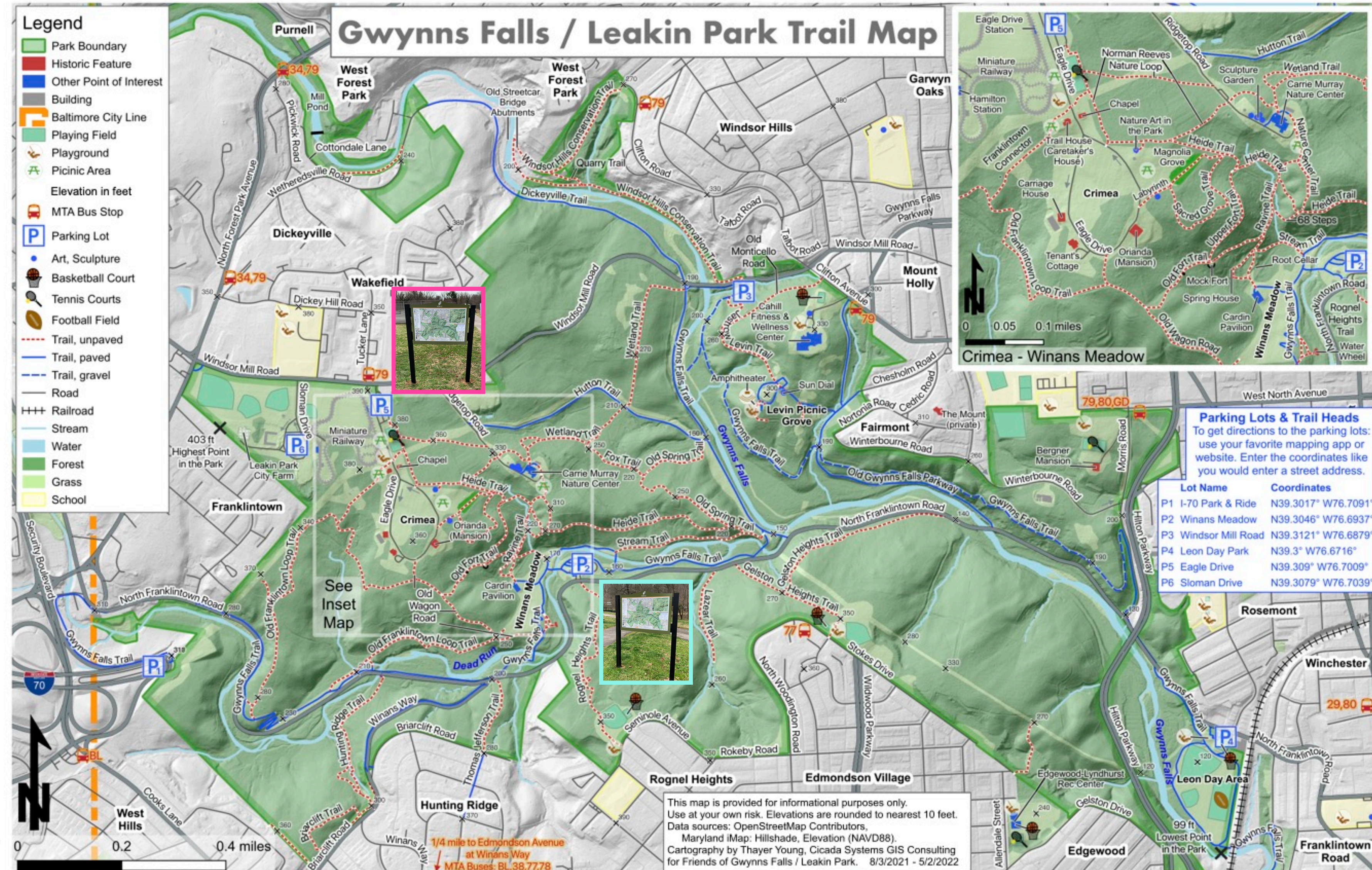
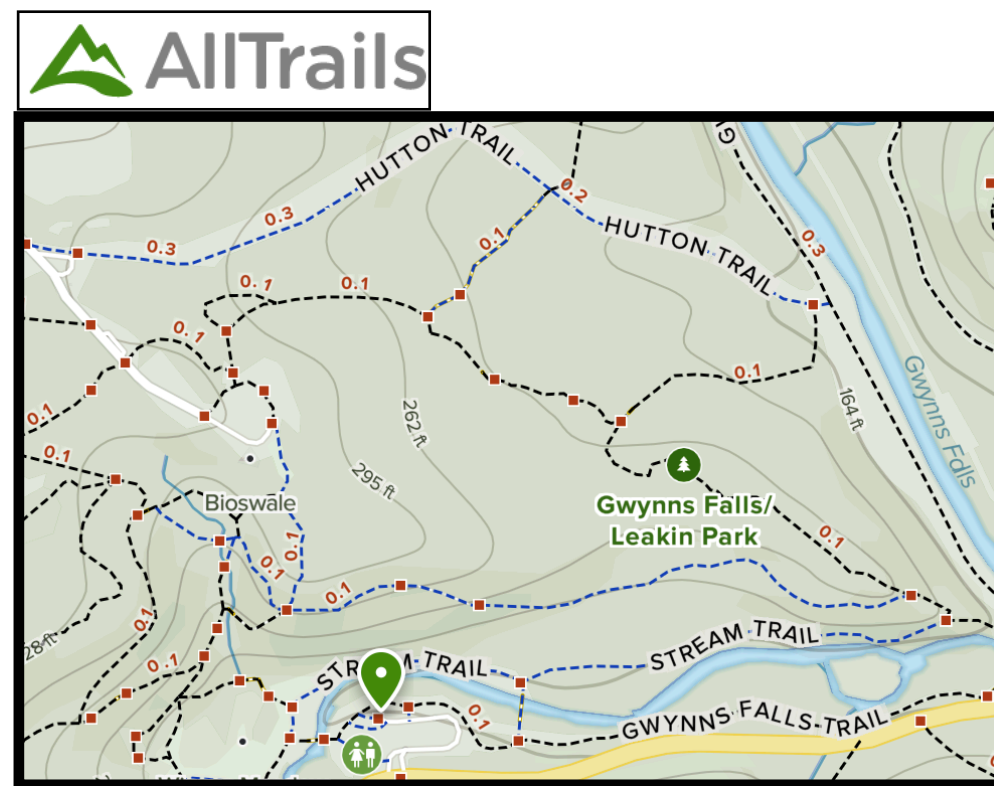
Additional sources listed on the OpenStreetMap Wiki



You requested too many nodes (limit is 50000). Either request a smaller area, or use planet.osm

OpenStreetMap → Park visitor experience and outreach

- Old trail map
 - Very nice map
 - Needed to be updated
 - No trail map sign in the park
- OpenStreetMap
 - Good source of basemap data
 - Easy to edit/update
 - current trail alignment
 - of GPSed trails
 - Source for AllTrails basemap
 - Popular outdoor app
 - Users find GFLP through AllTrails



- Now 2 installed trail map signs in parking lots
 - Eagle Drive
 - Winans Meadow

Data Examples

and how to use them to advance the Forest Preserve

- High Resolution Land Cover → Rationale for preserving the forest
- OpenStreetMap → Park visitor experience and outreach
- Land records, old maps → History of the park

Land records & old maps → History of the park's growth

Land Records: MDLANDREC.NET

- Maryland Archives
- Land records for all 23 counties & Balto City
 - Deeds, mortgages, etc.

• How to get the data:

- <https://mdlandrec.net>
- Create account: name, email, address
- Log in

1. Click on SELECT COUNTY

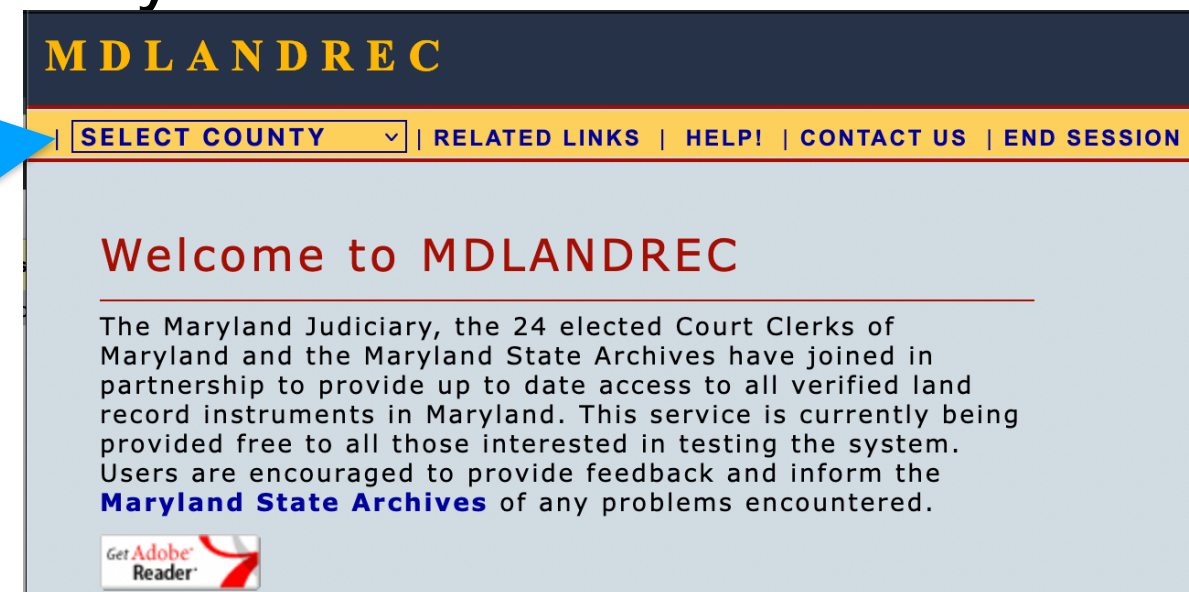
2. Enter the Book and (first) Page and click Go!

(from parcels, or CoDeMap v2 webpage click SDAT in a parcel's popup)

Parcels: (Book = Liber = DR1LIBER) (Page = Folio = DR1FOLIO)

3. If you don't know the clerk, you may get multiple results, take your best guess from the dates, or look at each one.

1.



Search Baltimore City Land Record Indices

Block Address Instruments Individual Search Corporation Search Corporation Soundex Individual Soundex SDAT Block Books Active Indices Retired Indices Plats.net

Jump to new volume

Clerk Book * Page * Go! Clear

NOTE: Search returns single page.

Block Search

Jul. 1, 1972-Jul. 15, 2022 (verified through Jul. 15, 2022)

* Required fields

Block No.: * Letter: Street:

NOTE: House number is not required. Do not enter street types (avenue, street, lane, etc.)

AS:

Date Range:

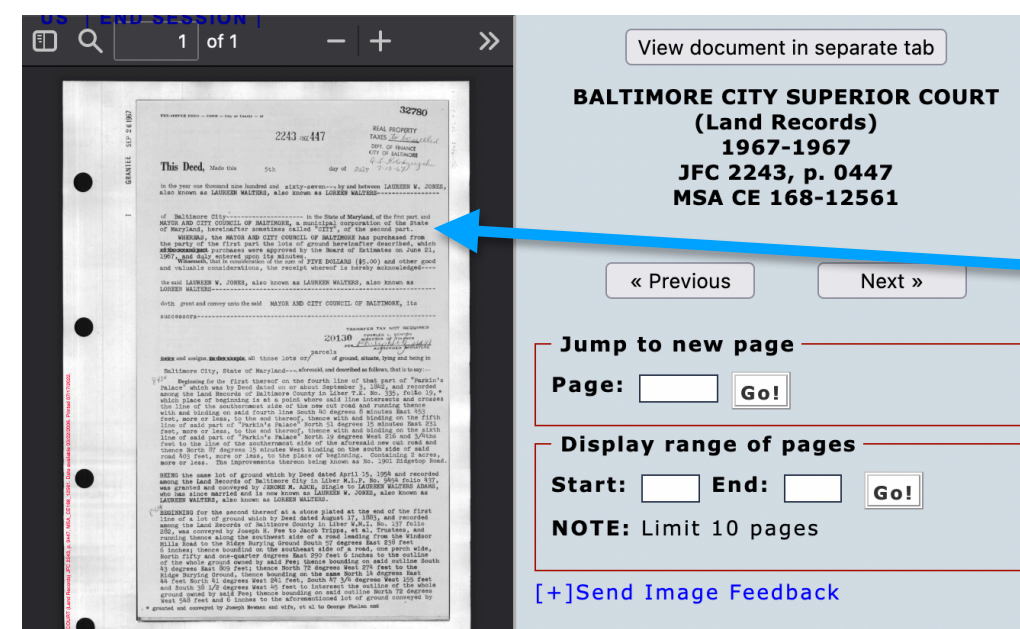
Sort By:

Search! Clear

Your search criteria resulted in multiple volumes. Please select from the list below.

Agency (Series)	Dates	Description	MSA Number
CIRCUIT COURT (Land Records)	1989-1989	SEB 2243	MSA CE 164-2243
CIRCUIT COURT (Land Records)	2002-2002	FMC 2243	MSA CE 164-11394
SUPERIOR COURT (Land Records)	1906-1906	RO 2243	MSA CE 168-2251
SUPERIOR COURT (Land Records)	1967-1967	JFC 2243	MSA CE 168-12561

3.



4. Your deed.
Now learn real estate jargon

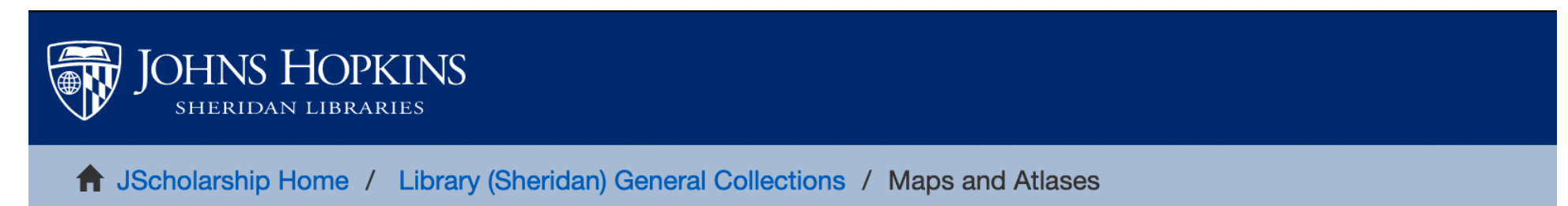
Old Maps: JScholarship

- JHU Eisenhower Library
 - Comprehensive historic maps of Baltimore
 - Paper & digital

• How to get the data:

- JScholarship: Maps & Atlases

<https://jscholarship.library.jhu.edu/handle/1774.2/32585>



Collections in this community

[Aerial Photography - Baltimore \(1924-1925, 1927, 1937-1938, 1948, 1952-1953, 1957, 1964, 1972\)](#)

Aerial Photography

[Aerial Photography - Ocean City \(1952-1964\)](#)

[Aerial Photography- Other Maryland Counties](#)

[Baltimore City Sheet Maps](#)

Baltimore City Sheet Maps

[Baltimore County Sheet Maps](#)

Baltimore County Sheet Maps

[Baltimore Development Plans](#)

Baltimore Development Plans

[Hackerman Map Collection](#)

Coming in Fall 2019

[Maryland Historical Shorelines Map Series](#)

[Maryland Historical Topographic Maps \(Scales 1:62,500; 1:31,680; 1:125,000\)](#)

Maryland Historical Topographic Maps

[Maryland Orthophoto Quadrangle Map Series](#)

[Maryland State Sheet Maps & State Map Series](#)

Maryland State Sheet Maps

[Maryland State, County and Baltimore City Atlases](#)

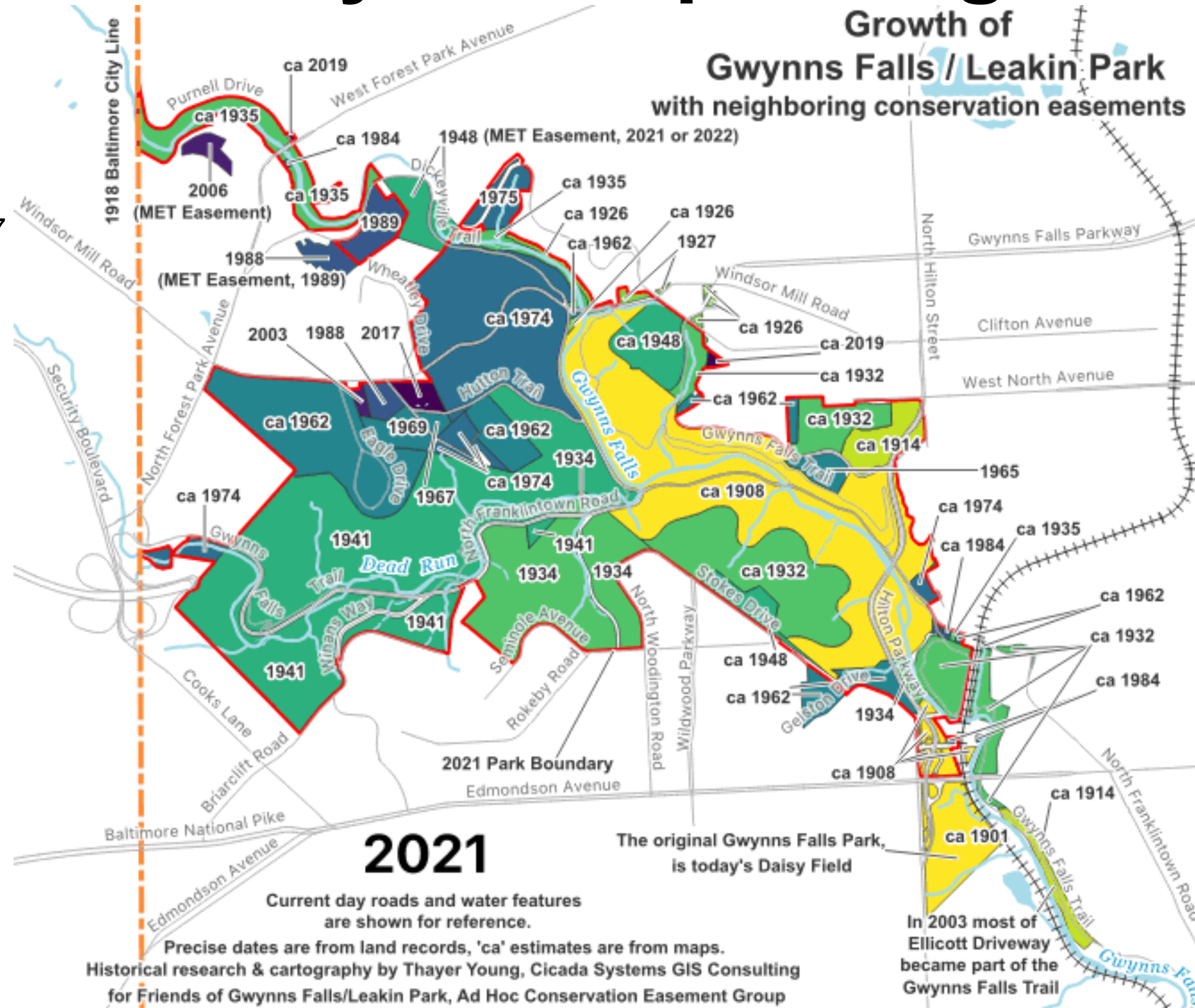
Maryland Atlases

Good Stuff!

Land records & old maps →

History of the park's growth

- The park was assembled:
 - from 69 parcels
 - between 1901 and 2017



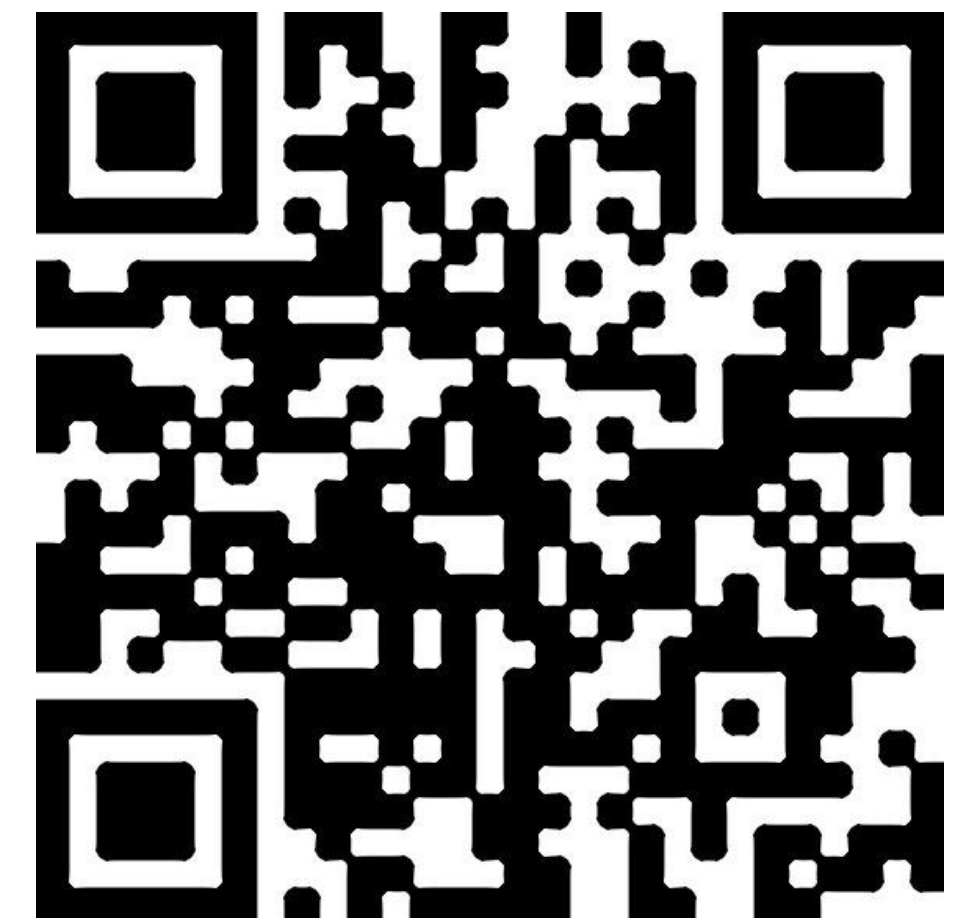
Resources

- Friends of Gwynns Falls Leakin Park
<https://friendsofgwynnsfallsleakinpark.org/>
- Old-Growth Forest Network
<https://www.oldgrowthforest.net/>
- High Resolution Land Use/Land Cover 2017-18 (click on [CBP Land Use/Land Cover Data Project](#))
<https://cicgis.org/portal/home/gallery.html>
Documentation:
<https://www.chesapeakeconservancy.org/conservation-innovation-center/high-resolution-data/lulc-data-project-2022/>
- Greenprint Parcel Evaluation Tool
<https://geodata.md.gov/greenprint/>
- OpenStreetMap
<https://openstreetmap.org>
AllTrails basemap of Gwynns Falls Leakin Park
https://www.alltrails.com/explore/us/maryland/gwynn-oak?b_tl_lat=39.31192054544738&b_tl_lng=-76.70213118987841&b_br_lat=39.297890464812724&b_br_lng=-76.68713227706695
- Land records, Maryland Archives
<https://mdlandrec.net>
- CoDeMap v2 (click on a parcel then on SDAT in popup)
<https://cels.baltimorehousing.org/codemapv2/>
- State Department of Assessment & Taxation (deed references)
<https://sdat.dat.maryland.gov/RealProperty/Pages/default.aspx>
- Old maps
<https://jscholarship.library.jhu.edu/handle/1774.2/32585>

Thayer Young
Cicada Systems GIS Consulting
thayer.young@cicadagis.com
<https://www.cicadagis.com>

To download a PDF of this presentation:
https://cicadagis.com/data_week.html

Support the Forest Preserve
Sign the online PETITION!



<https://cicadagis.com/wordpress/survey/>