

Tree Care and Technology in Baltimore City

Kajall Hylton, GIS Coordinator
Marcus Tuah, Tree Care Manager



For Baltimore. ⚡

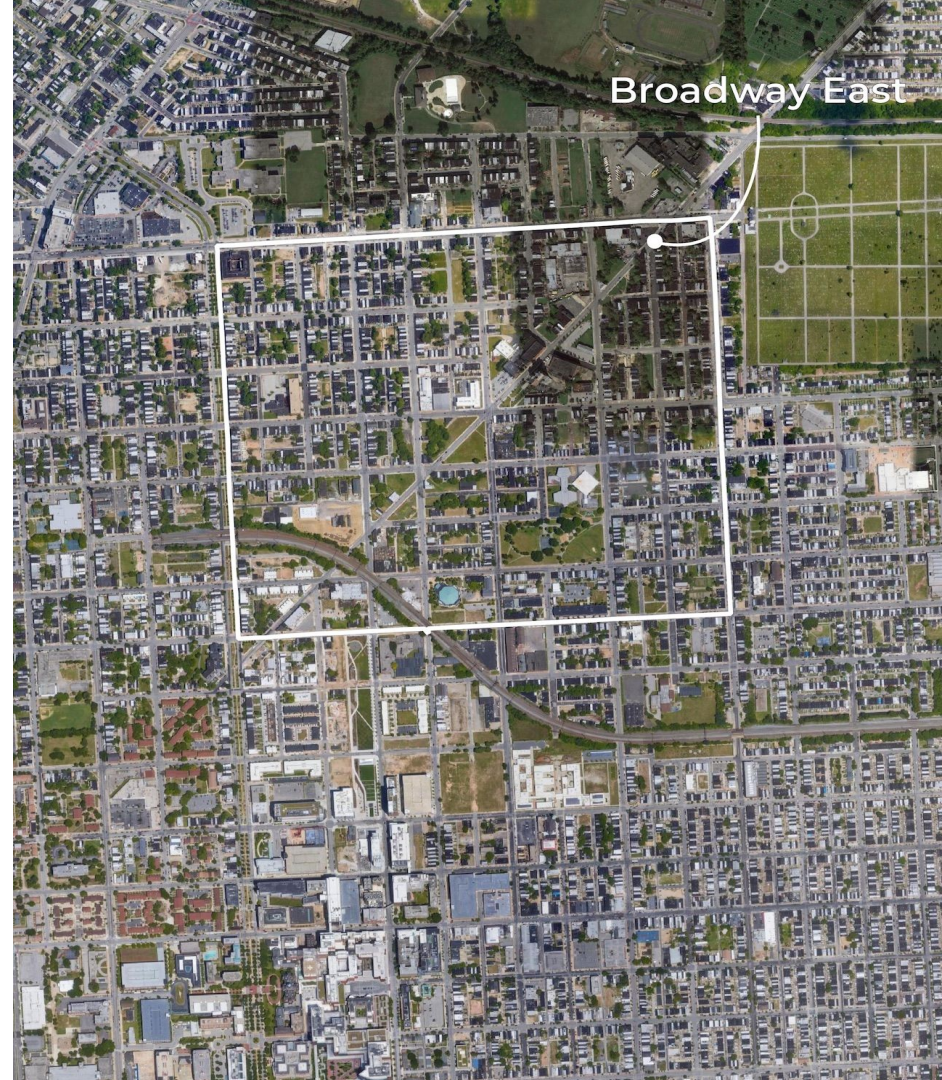
Established in 2008, the Baltimore Tree Trust is building a local workforce to protect Baltimore's urban forest and plant a greener, healthier city for all of our neighbors.

⚡ By Baltimore.





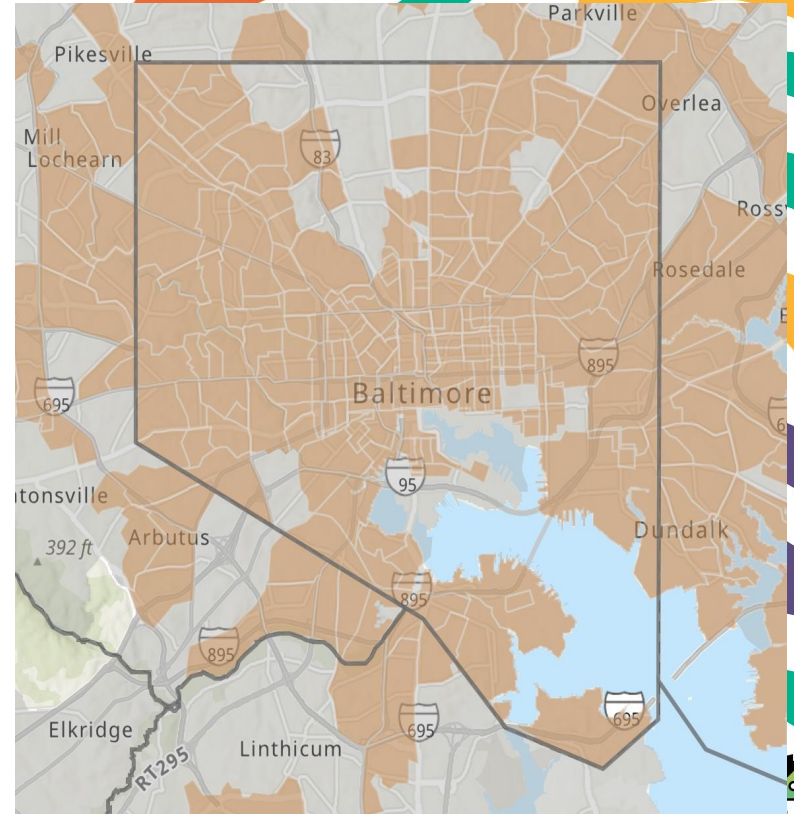
Roland Park



Broadway East

Underserved Areas As Defined by the 2021 Tree Solutions Now Act

- This map displays areas qualifying for funding through HB991's Urban Trees Program.
- The bill defines “Underserved Area” as an urban area that falls within at least one of these criteria:
 - A Neighborhood at any point in time redlined or marked as “hazardous” by the HOLC.
 - A census tract where the average rate of unemployment exceeds the average rate of unemployment for the state.
 - A census tract with a median household income is equal to or less than 75% of the median household income for the state



Site Assessment

Project Coordinators and Site inspectors conduct site assessments from the field to determine how optimal the space is for a tree. They also input Site prep work like new wells, stump removals, and expansions.

Outreach

After assessment is done, Outreach is performed to let the community know that we are doing tree work. This involves flyers, knocking on doors and councilman introductions.



Site Maintenance

Maintenance crews then get a map of all the planted trees and do maintenance on a cycle schedule. If trees have died, then the maintenance crew docks the tree as dead and will remove it for future replanting.

Site Planting

After being cleared for planting crews get a map of available planting sites and plant, stake, and mulch the trees for their final transplant.

Site Prep

Site prep crews come and complete work to make a potential planting area viable for tree planting. This consists of tree pit creation, stump removal, and weed removal.

Seasonal Tree Care Goals



Summer Maintenance

Watering, mulching, and tree corrections.



Winter Maintenance

Pruning, mulching, destaking, and removing dead trees.

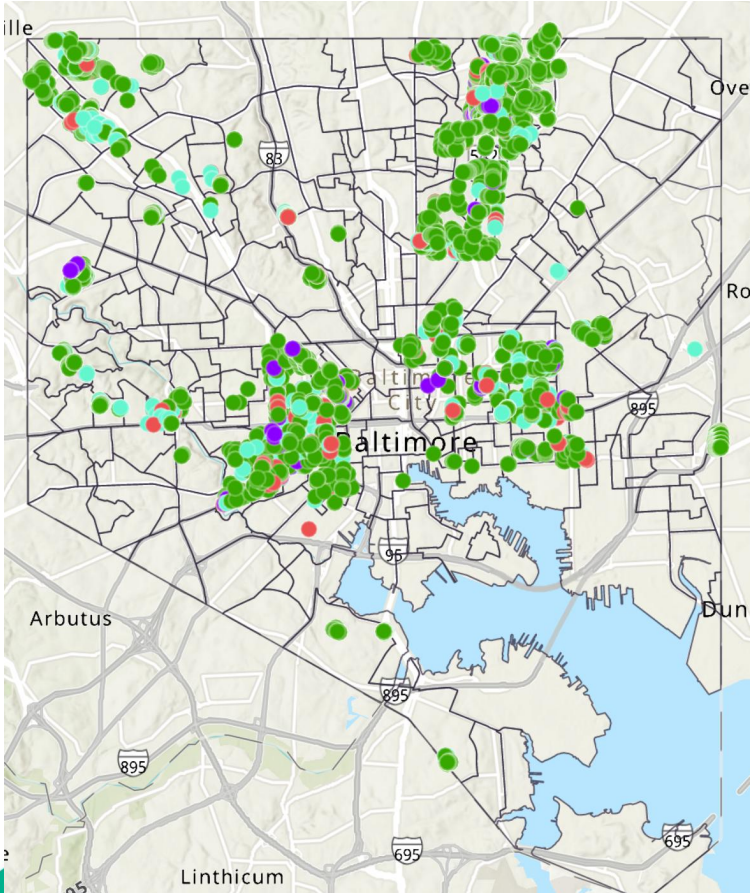
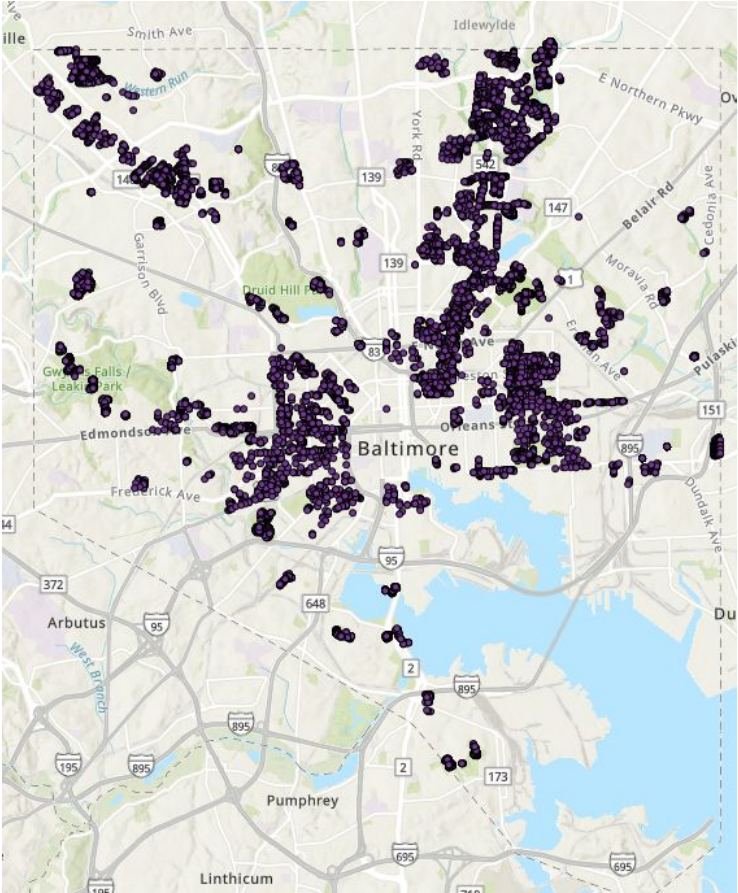


Spring & Fall Maintenance

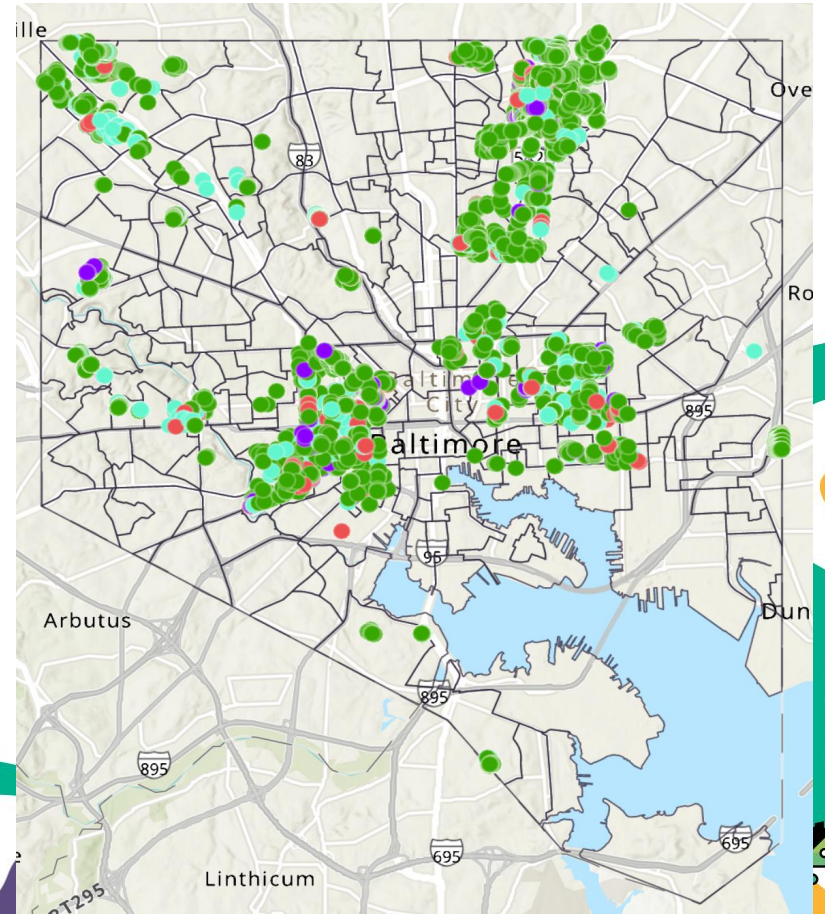
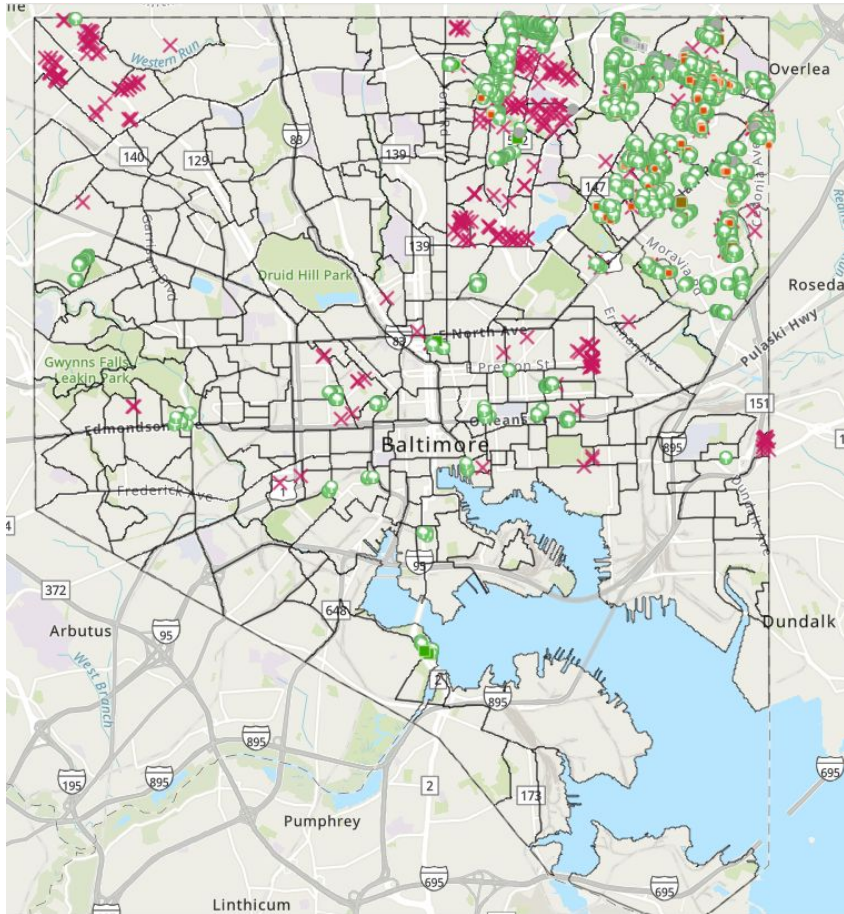
Mix of watering and mulching, and installing deer fencing at vulnerable project sites.



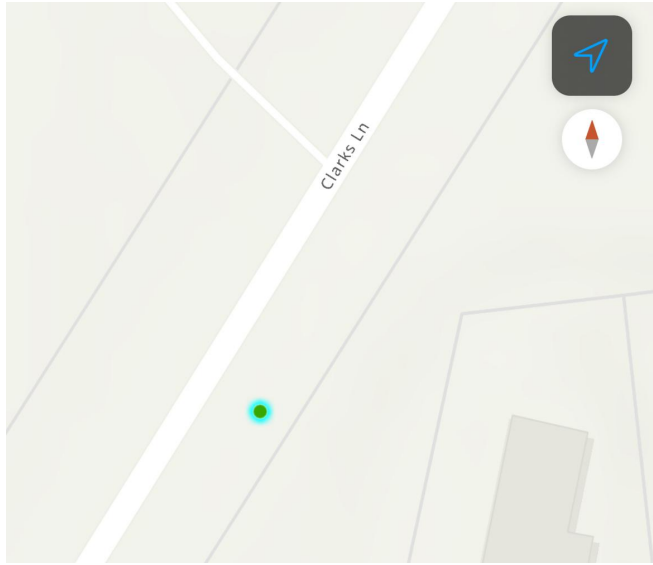
Total Inventory vs. Trees in Warranty



Inventory Current vs. Inventory Archive



What Data is Collected for Tree Care?



8:47

Maps

Tree Care Inventory: Cross Country ✕
39.365497°N 76.696618°W 8.4 km

Edited by
elliot_BTT · Jul 1, 2024

Fields ▾

Address
3315 Clarks Ln, Baltimore 21215

Common Name
Serviceberry (Apple)

Tree Status
Planted

Date Planted
3/21/2022

Tree Condition
Good

Date Watered
6/26/2024

Date Mulched
7/1/2024


Tree Care Notes

✎ + ⋮

8:48

Cancel Collect Submit

[Inventory_Archive] Tree Ca...
39.365497°N 76.696618°W



Tree Care Crew *
Donald Jarvis ✕

Tree Condition *
Good ✕

Tree Care Task
Mulch ✕

Tree Care Task 2
Water ✕

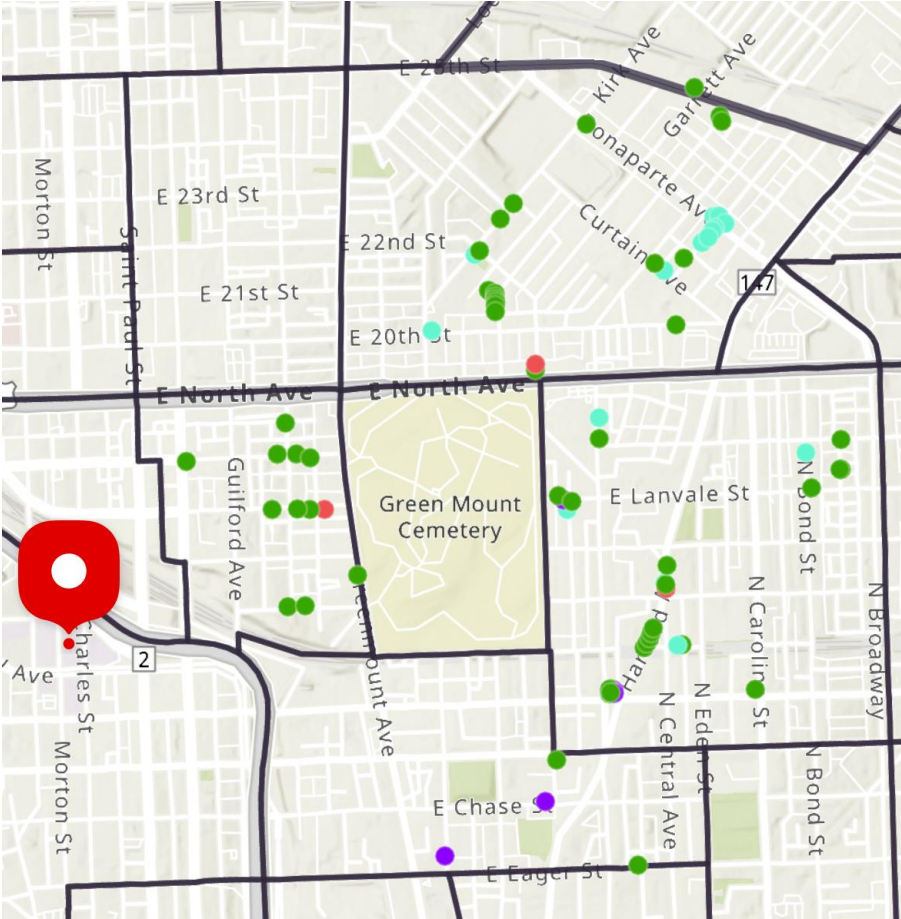
Date Watered *
6/26/24, 10:43 AM ✕

Date Mulched *
7/1/24, 10:54 AM ✕

Project	District	Neighborhood	Site Type	Main Streets	Condition	Watering				
						S1	S2	S3	S4	S5
CARE - Replacements and N. Madeira St Lot	East	CARE	Neighborhood	N Duncan St and N Madeira St	2 - Poor / high priority	4/19/24	5/29/24	7/3/24		
Eastwood - Street Trees	East	Eastwood	Neighborhood	Quinton St, Gough St	4 - Good / low priority	3/26/24	5/9/24	6/27/24	6/29/24	
Greenmount West - FFS Street Trees	East	Greenmount West	Neighborhood	Greenmount Ave, E. Lanvale St	4 - Good / low priority	4/10/24	5/10/24	7/2/24	7/12/24	



Tree Care Dashboard



Good/Fair



Poor



Dead

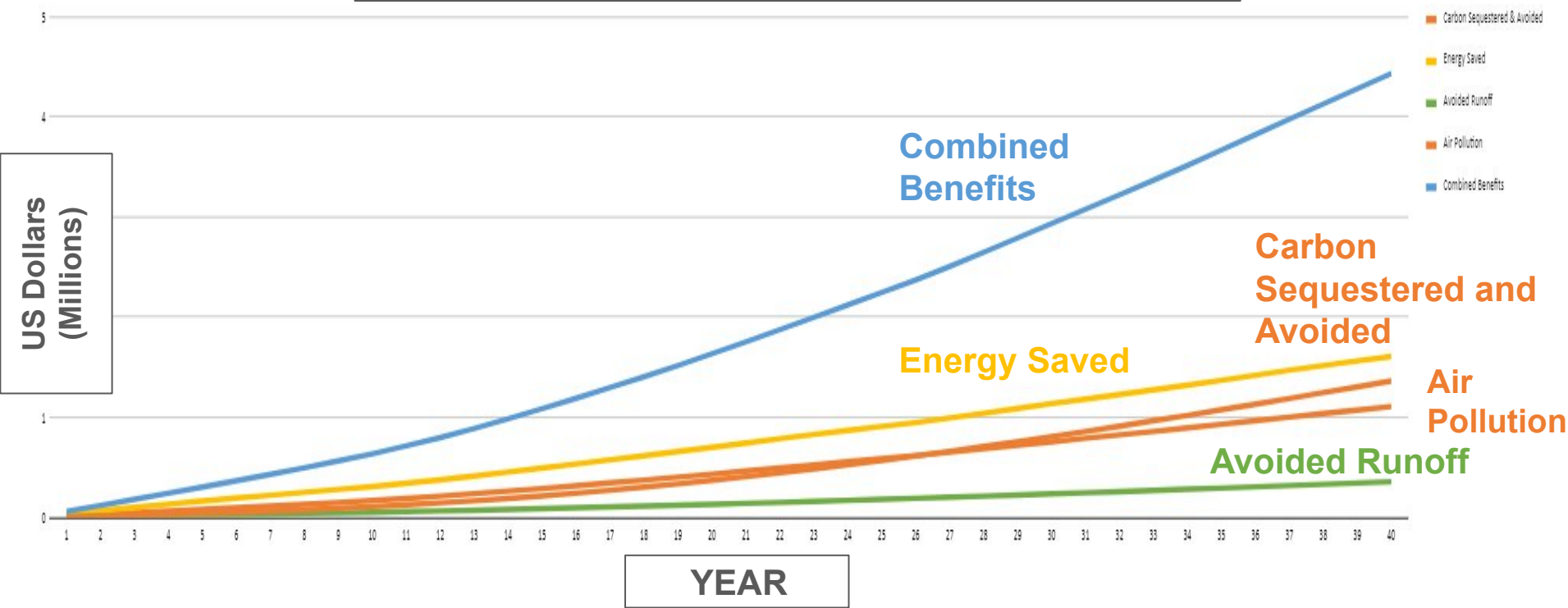


Removed



BTT and the USFS

Cumulative Benefits Over Years



Thank You!

